

Anti-HSV1 Antibody [10A3] (A250920)

Specifications:

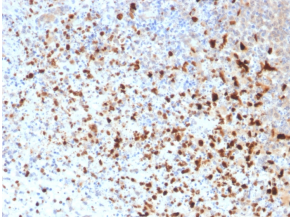
Name:	Anti-HSV1 Antibody [10A3]
Description:	Mouse monoclonal [10A3] antibody to HSV1.
Specificity:	The antibody reacts with HSV type 1 specific antigen. It is suitable for detection of HSV in human cellular material obtained from superficial lesions or biopsies and for the early identification of HSV in infected tissue cultures. The herpes simplex virus (HSV) (also known as cold sore, night fever or fever blister) is a virus that causes a contagious disease. There are two main types of Herpes Simplex Virus (HSV), 1 and 2. The HSV-1 strain generally appears in the orafacial organs. HSV2 usually resides in the sacral ganglion at the base of the spine. All herpes viruses are morphologically identical: they have a large double-stranded DNA genome and the virion consists of an icosahedral nucleocapsid, which is surrounded by a lipid bilayer envelope.
Applications:	IHC-P
Recommended Dilutions:	IHC-P: 1-2 µg/ml
Reactivity:	Herpes Simplex Virus 1
Immunogen:	Detergent-solubilized herpes simplex virus (HSV) type 1 infected cells.
Host:	Mouse
Clonality:	Monoclonal
Clone ID:	10A3
Isotype:	IgG1
Light Chains:	kappa
Conjugate:	Unconjugated
Purification:	Protein A/G chromatography.
Concentration:	200 µg/ml
Product Form:	Liquid
Formulation:	Supplied in 10mM Phosphate Buffered Saline with 0.05% BSA and 0.05% Sodium Azide.
Storage:	Shipped at 4°C. Upon delivery aliquot and store at -20°C. Avoid freeze / thaw cycles.
General Notes:	This monoclonal antibody is also available in a different formulation without BSA and Sodium Azide - Anti-HSV1 Antibody [10A3] - BSA and Azide free (A254100).

Anti-HSV1 Antibody [10A3] (A250920)

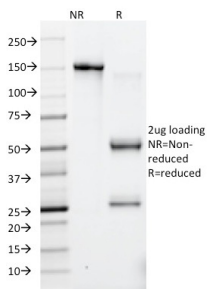
Specifications continued:

Disclaimer: This product is for research use only. It is not intended for diagnostic or therapeutic use.

Images:



Immunohistochemical analysis of formalin-fixed, paraffin-embedded human cervix using Anti-HSV1 Antibody [10A3].



SDS-PAGE analysis of Anti-HSV1 Antibody [10A3] under non-reduced and reduced conditions; showing intact IgG and intact heavy and light chains, respectively. SDS-PAGE analysis confirms the integrity and purity of the antibody.