

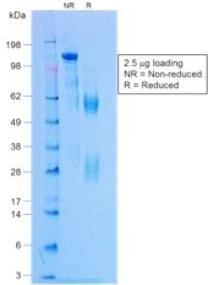
Rabbit IgG [NCRBM/1520R] (A251005)

Specifications:

Name:	Rabbit IgG [NCRBM/1520R]
Description:	Rabbit IgG - Isotype Control
Specificity:	To serve as a true negative control for various procedures, this rabbit monoclonal IgG should be used under the identical conditions and at the same dilution as the rabbit monoclonal antibody being used for a positive reaction.
Applications:	Flow Cytometry, IF, IP, IHC, WB, Isotype Control
Host:	Rabbit
Clonality:	Monoclonal
Clone ID:	NCRBM/1520R
Isotype:	IgG
Conjugate:	Unconjugated
Purification:	Protein A chromatography.
Concentration:	200 µg/ml
Product Form:	Liquid
Formulation:	Supplied in 10mM Phosphate Buffered Saline with 0.05% BSA and 0.05% Sodium Azide.
Storage:	Shipped at 4°C. Upon delivery aliquot and store at -20°C. Avoid freeze / thaw cycles.
General Notes:	This monoclonal antibody is also available in a different formulation without BSA and Sodium Azide - Rabbit IgG [NCRBM/1520R] - BSA and Azide free (A254184).
Disclaimer:	This product is for research use only. It is not intended for diagnostic or therapeutic use.

Rabbit IgG [NCRBM/1520R] (A251005)

Images:



SDS-PAGE analysis of Rabbit IgG [NCRBM/1520R] under non-reduced and reduced conditions; showing intact IgG and intact heavy and light chains, respectively. SDS-PAGE analysis confirms the integrity and purity of the antibody.