

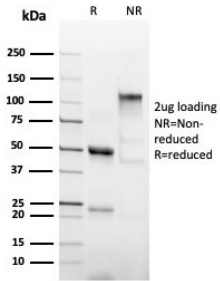
## Anti-His Tag Antibody [6HIS/6402R] (A251013)

### Specifications:

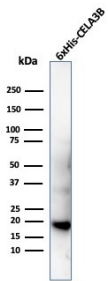
Name:	Anti-His Tag Antibody [6HIS/6402R]
Description:	Recombinant rabbit monoclonal [6HIS/6402R] antibody to His Tag.
Specificity:	This antibody recognizes both the free and protein-conjugated (either soluble or cell bound) form of hexa-histidine. This antibody is highly specific to hexa-histidine and shows no cross-reaction with other structurally related compounds.
Applications:	WB, Flow Cytometry, IF, IP
Recommended Dilutions:	WB: 1-2 µg/ml, Flow Cytometry: 0.5-1 µg/million cells, IF: 0.5-1 µg/ml, IP: 2-4 µg / 500 µg protein lysate
Immunogen:	Recombinant hexa-histidine tagged human CD70 protein.
Host:	Rabbit
Clonality:	Monoclonal
Clone ID:	6HIS/6402R
Isotype:	IgG
Light Chains:	kappa
Conjugate:	Unconjugated
Purification:	Protein A/G chromatography.
Concentration:	200 µg/ml
Product Form:	Liquid
Formulation:	Supplied in 10mM Phosphate Buffered Saline with 0.05% BSA and 0.05% Sodium Azide.
Storage:	Shipped at 4°C. Upon delivery aliquot and store at -20°C. Avoid freeze / thaw cycles.
General Notes:	This monoclonal antibody is also available in a different formulation without BSA and Sodium Azide - Anti-His Tag Antibody [6HIS/6402R] - BSA and Azide free (A254192).
Disclaimer:	This product is for research use only. It is not intended for diagnostic or therapeutic use.

## Anti-His Tag Antibody [6HIS/6402R] (A251013)

### Images:



SDS-PAGE analysis of Anti-His Tag Antibody [6HIS/6402R] under non-reduced and reduced conditions; showing intact IgG and intact heavy and light chains, respectively. SDS-PAGE analysis confirms the integrity and purity of the antibody.



Western blot analysis of recombinant His tagged CELA3B protein using Anti-His Tag Antibody [6HIS/6402R].