

Anti-p27 KIP 1 Antibody [SX53G8] - BSA and Azide free (A251277)

Specifications:

Name:	Anti-p27 KIP 1 Antibody [SX53G8] - BSA and Azide free
Description:	Mouse monoclonal [SX53G8] antibody to p27 KIP 1.
Specificity:	This antibody recognizes a 27kDa protein, identified as the p27Kip1, a cell cycle regulatory mitotic inhibitor. It is highly specific and shows no cross-reaction with other related mitotic inhibitors. In Western blotting of cell lysates from 7 human breast cancer cell lines (ZR75-1, ZR75-30, MCF-7, MDAMB453, T47D, CAL51, 734B), the antibody labels a single band corresponding to p27Kip1. It functions as a negative regulator of G1 progression and has been proposed to function as a possible mediator of TGF- induced G1 arrest. p27Kip1 is a candidate tumor suppressor gene. Reportedly, low p27 expression has been associated with unfavorable prognosis in renal cell carcinoma, colon carcinoma, breast carcinomas, non-small-cell lung carcinoma, hepatocellular carcinoma, multiple myeloma, and lymph node metastases in papillary carcinoma of the thyroid, as well as a more aggressive phenotype in carcinoma of the cervix.
Applications:	Flow Cytometry, IF, IHC-P
Recommended Dilutions:	Flow Cytometry: 1-2 µg/million cells, IF: 1-2 µg/ml, IHC-P: 0.25-0.5 µg/ml
Reactivity:	Human, Mouse, Rat, Monkey
Immunogen:	Purified GST-p27 fusion protein of human origin.
Host:	Mouse
Clonality:	Monoclonal
Clone ID:	SX53G8
Isotype:	IgG1
Light Chains:	kappa
Conjugate:	Unconjugated
Purification:	Protein A/G chromatography.
Concentration:	1 mg/ml
Product Form:	Liquid
Formulation:	Supplied in 10mM Phosphate Buffered Saline; without Sodium Azide and carrier free.
Storage:	Shipped at 4°C. Upon delivery aliquot and store at -20°C. Avoid freeze / thaw cycles.
General Notes:	This monoclonal antibody is also available in a different formulation with BSA and Sodium Azide - Anti-p27 KIP 1 Antibody [SX53G8] (A248094).

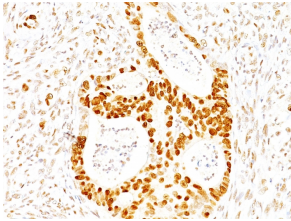
Anti-p27 KIP 1 Antibody [SX53G8] - BSA and Azide free (A251277)

Specifications continued:

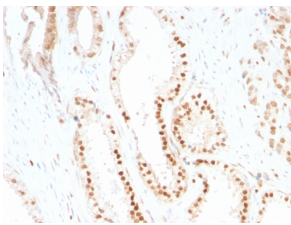
Disclaimer:

This product is for research use only. It is not intended for diagnostic or therapeutic use.

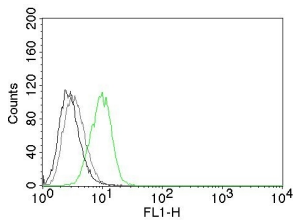
Images:



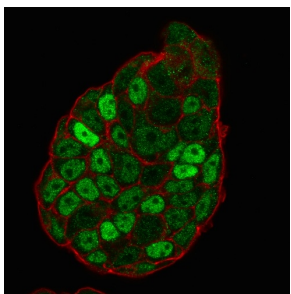
Immunohistochemical analysis of formalin-fixed, paraffin-embedded human colon carcinoma using Anti-p27 KIP 1 Antibody [SX53G8].



Immunohistochemical analysis of formalin-fixed, paraffin-embedded human prostate carcinoma using Anti-p27 KIP 1 Antibody [SX53G8].



Flow cytometric analysis of HeLa cells labeling p27 with Anti-p27 KIP 1 Antibody [SX53G8] (AF488) (Green). Cells alone (Black). Isotype Control (Grey).



Immunofluorescent analysis of PFA fixed MCF-7 cells stained with Anti-p27 KIP 1 Antibody [SX53G8] followed by Goat Anti-Mouse IgG (CF® 488) (Green). Membrane is stained with Phalloidin-CF® 640.