

## Anti-Luteinizing Hormone alpha Antibody [LHa/756] - BSA and Azide free (A251349)

### Specifications:

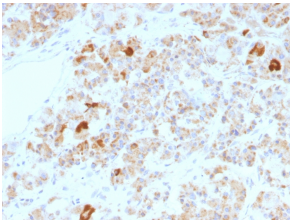
Name:	Anti-Luteinizing Hormone alpha Antibody [LHa/756] - BSA and Azide free
Description:	Mouse monoclonal [LHa/756] antibody to Luteinizing Hormone alpha.
Specificity:	<p>This antibody reacts with a protein of ~13kDa, identified as alpha sub-unit of Luteinizing Hormone (LH). Its structure is similar to the other glycoproteins, follicle-stimulating hormone (FSH), thyroid-stimulating hormone (TSH), and human chorionic gonadotropin (hCG). The protein dimer contains 2 polypeptide units, labeled alpha and beta subunits that are connected by two bridges. The alpha subunits of LH, FSH, TSH, and hCG are identical, and contain 92 amino acids. The beta subunits vary. LH has a beta subunit of 121 amino acids (LHB) that confers its specific biologic action and is responsible for interaction with the LH receptor. This beta subunit contains the same amino acids in sequence as the beta subunit of hCG and both stimulate the same receptor; however, the hCG beta subunit contains an additional 24 amino acids and the hormones differ in the composition of their sugar moieties. LH is synthesized and secreted by gonadotrophs in the anterior lobe of the pituitary gland. In concert with the other pituitary gonadotropin follicle-stimulating hormone (FSH), it is necessary for proper reproductive function. In the female, an acute rise of LH levels triggers ovulation. In the male, where LH has also been called Interstitial Cell-Stimulating Hormone (ICSH), it stimulates Leydig cell production of testosterone. LH is a useful marker in classification of pituitary tumors and the study of pituitary disease.</p>
Applications:	IHC-P
Recommended Dilutions:	IHC-P: 1-2 µg/ml
Reactivity:	Human
Immunogen:	Recombinant full-length human LH alpha protein.
Host:	Mouse
Clonality:	Monoclonal
Clone ID:	LHa/756
Isotype:	IgG1
Light Chains:	kappa
Conjugate:	Unconjugated
Purification:	Protein A/G chromatography.
Concentration:	1 mg/ml
Product Form:	Liquid

## Anti-Luteinizing Hormone alpha Antibody [LHa/756] - BSA and Azide free (A251349)

### Specifications continued:

Formulation:	Supplied in 10mM Phosphate Buffered Saline; without Sodium Azide and carrier free.
Storage:	Shipped at 4°C. Upon delivery aliquot and store at -20°C. Avoid freeze / thaw cycles.
General Notes:	This monoclonal antibody is also available in a different formulation with BSA and Sodium Azide - Anti-Luteinizing Hormone alpha Antibody [LHa/756] (A248166).
Disclaimer:	This product is for research use only. It is not intended for diagnostic or therapeutic use.

### Images:



Immunohistochemical analysis of formalin-fixed, paraffin-embedded human pituitary using Anti-Luteinizing Hormone alpha Antibody [LHa/756].