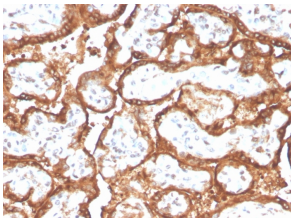


Anti-HCG beta Antibody [HCGb/2728R] - BSA and Azide free (A251359)

Specifications:

Name:	Anti-HCG beta Antibody [HCGb/2728R] - BSA and Azide free
Description:	Recombinant rabbit monoclonal [HCGb/2728R] antibody to HCG beta.
Applications:	IHC-P
Recommended Dilutions:	IHC-P: 1-2 µg/ml
Reactivity:	Human
Immunogen:	Synthetic peptide corresponding to amino acids within 1-100 of hCG.
Host:	Rabbit
Clonality:	Monoclonal
Clone ID:	HCGb/2728R
Isotype:	IgG
Conjugate:	Unconjugated
Purification:	Protein A/G chromatography.
Concentration:	1 mg/ml
Product Form:	Liquid
Formulation:	Supplied in 10mM Phosphate Buffered Saline; without Sodium Azide and carrier free.
Storage:	Shipped at 4°C. Upon delivery aliquot and store at -20°C. Avoid freeze / thaw cycles.
General Notes:	This monoclonal antibody is also available in a different formulation with BSA and Sodium Azide - Anti-HCG beta Antibody [HCGb/2728R] (A248176).
Disclaimer:	This product is for research use only. It is not intended for diagnostic or therapeutic use.

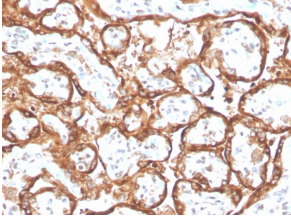
Images:



Immunohistochemical analysis of formalin-fixed, paraffin-embedded human placenta using Anti-HCG beta Antibody [HCGb/2728R].

Anti-HCG beta Antibody [HCGb/2728R] - BSA and Azide free (A251359)

Images continued:



Immunohistochemical analysis of formalin-fixed, paraffin-embedded human placenta using Anti-HCG beta Antibody [HCGb/2728R].