

Anti-CD21 Antibody [CR2/2754] - BSA and Azide free (A251447)

Specifications:

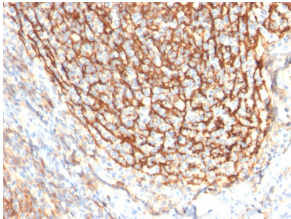
Name:	Anti-CD21 Antibody [CR2/2754] - BSA and Azide free
Description:	Mouse monoclonal [CR2/2754] antibody to CD21.
Specificity:	This antibody recognizes a protein of 140kDa, which is identified as the complement receptor 2 (CR2) or CD21. This protein is expressed strongly on mature B cells, follicular dendritic cells and weakly on immature thymocytes and T lymphocytes. In B-cell ontogeny, CD21 appears after the pre-B-stage, is maintained during peripheral B-cell development and is lost upon terminal differentiation into plasma cells. CD21 expression is also gradually lost after stimulation of B cells in vitro. CD21 functions as receptor for C3d, C3dg and iC3b Complement components, for EBV and for IFNalpha. CD21 binds to CD23 and associates with CD19, CD81 and Leu13 to form a large signal-transduction complex involved in B cell activation.
Applications:	ELISA, Flow Cytometry, WB, IF, IHC-P
Recommended Dilutions:	Flow Cytometry: 1-2 µg/million cells, WB: 1-2 µg/ml, IF: 1-2 µg/ml, IHC-P: 1-2 µg/ml
Reactivity:	Human
Immunogen:	Recombinant fragment, around amino acids 142-240, of human CD21 protein. The exact sequence is proprietary.
Host:	Mouse
Clonality:	Monoclonal
Clone ID:	CR2/2754
Isotype:	IgG1
Light Chains:	kappa
Conjugate:	Unconjugated
Purification:	Protein A/G chromatography.
Concentration:	1 mg/ml
Product Form:	Liquid
Formulation:	Supplied in 10mM Phosphate Buffered Saline; without Sodium Azide and carrier free.
Storage:	Shipped at 4°C. Upon delivery aliquot and store at -20°C. Avoid freeze / thaw cycles.
General Notes:	This monoclonal antibody is also available in a different formulation with BSA and Sodium Azide - Anti-CD21 Antibody [CR2/2754] (A248265).

Anti-CD21 Antibody [CR2/2754] - BSA and Azide free (A251447)

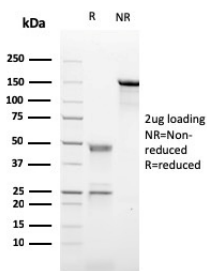
Specifications continued:

Disclaimer: This product is for research use only. It is not intended for diagnostic or therapeutic use.

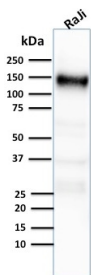
Images:



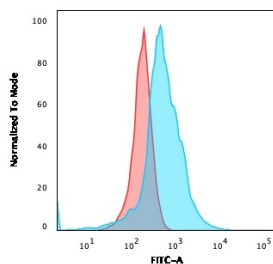
Immunohistochemical analysis of formalin-fixed, paraffin-embedded human tonsil dendritic cells using Anti-CD21 Antibody [CR2/2754].



SDS-PAGE analysis of Anti-CD21 Antibody [CR2/2754] under non-reduced and reduced conditions; showing intact IgG and intact heavy and light chains, respectively. SDS-PAGE analysis confirms the integrity and purity of the antibody.



Western blot analysis of human Raji cell lysate using Anti-CD21 Antibody [CR2/2754].



Flow cytometric analysis of PFA fixed MOLT4 cells using Anti-CD21 Antibody [CR2/2754] followed by Goat Anti-Mouse IgG (CF® 488) (Blue). Isotype Control (Red).