

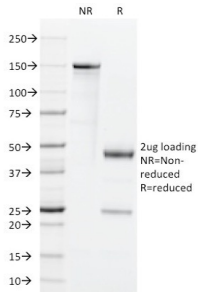
## Anti-GM-CSF Antibody [BVD2-21C11] - BSA and Azide free (A251455)

### Specifications:

Name:	Anti-GM-CSF Antibody [BVD2-21C11] - BSA and Azide free
Description:	Rat monoclonal [BVD2-21C11] antibody to GM-CSF.
Applications:	Neutralization Studies, IP, Flow Cytometry, IF, WB, IHC-Fr
Recommended Dilutions:	IP: 0.5-1 µg / 500 µg protein lysate, Flow Cytometry: 1-2 µg/million cells, IF: 1-2 µg/ml, WB: 1-2 µg/ml, IHC-Fr: 1-2 µg/ml
Reactivity:	Human, Cynomolgus Monkey, Rhesus Monkey
Immunogen:	Recombinant human GM-CSF protein.
Host:	Rat
Clonality:	Monoclonal
Clone ID:	BVD2-21C11
Isotype:	IgG2a
Light Chains:	kappa
Conjugate:	Unconjugated
Purification:	Protein A/G chromatography.
Concentration:	1 mg/ml
Product Form:	Liquid
Formulation:	Supplied in 10mM Phosphate Buffered Saline; without Sodium Azide and carrier free.
Storage:	Shipped at 4°C. Upon delivery aliquot and store at -20°C. Avoid freeze / thaw cycles.
General Notes:	This monoclonal antibody is also available in a different formulation with BSA and Sodium Azide - Anti-GM-CSF Antibody [BVD2-21C11] (A248273).
Disclaimer:	This product is for research use only. It is not intended for diagnostic or therapeutic use.

## Anti-GM-CSF Antibody [BVD2-21C11] - BSA and Azide free (A251455)

### Images:



SDS-PAGE analysis of Anti-GM-CSF Antibody [BVD2-21C11] under non-reduced and reduced conditions; showing intact IgG and intact heavy and light chains, respectively. SDS-PAGE analysis confirms the integrity and purity of the antibody.