

## Anti-G-CSF Antibody [rCSF3/900] - BSA and Azide free (A251459)

### Specifications:

Name:	Anti-G-CSF Antibody [rCSF3/900] - BSA and Azide free
Description:	Recombinant mouse monoclonal [rCSF3/900] antibody to G-CSF.
Specificity:	This antibody recognizes granulocyte-colony stimulating factor (G-CSF) in the cytoplasm of mature granulocytes. It shows no reactivity with any other cell types. Markers of myeloid cells are useful in the identification of different levels of cellular differentiation. It reacts with early precursor and mature forms of myeloid cells. It is useful for the detection of myeloid leukemias and granulocytic sarcomas. It can be used as a marker of granulocytes in normal tissues or inflammatory processes. G-CSF is a pleiotropic cytokine that influences differentiation, proliferation and activation of the neutrophilic granulocyte lineage. The human G-CSF cDNA encodes a 207 amino acid precursor containing a 29 amino acid signal peptide that is proteolytically cleaved to form a 178 amino acid residue mature protein. Two G-CSF s, which are identical except for a three amino acid deletion in the amino-terminus of one form of the protein have been isolated from human cells. Murine and human G-CSF s share 73% sequence identity at the amino acid level.
Applications:	IHC-P
Recommended Dilutions:	IHC-P: 1-2 µg/ml
Reactivity:	Human, Macaque Monkey
Immunogen:	Recombinant full-length human CSF3 protein.
Host:	Mouse
Clonality:	Monoclonal
Clone ID:	rCSF3/900
Isotype:	IgG1
Light Chains:	kappa
Conjugate:	Unconjugated
Purification:	Protein A/G chromatography.
Concentration:	1 mg/ml
Product Form:	Liquid
Formulation:	Supplied in 10mM Phosphate Buffered Saline; without Sodium Azide and carrier free.
Storage:	Shipped at 4°C. Upon delivery aliquot and store at -20°C. Avoid freeze / thaw cycles.

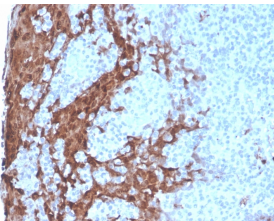
## Anti-G-CSF Antibody [rCSF3/900] - BSA and Azide free (A251459)

### Specifications continued:

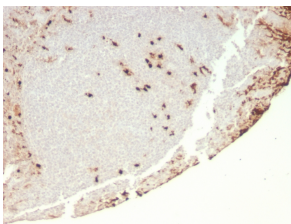
**General Notes:** This monoclonal antibody is also available in a different formulation with BSA and Sodium Azide - Anti-G-CSF Antibody [rCSF3/900] (A248277).

**Disclaimer:** This product is for research use only. It is not intended for diagnostic or therapeutic use.

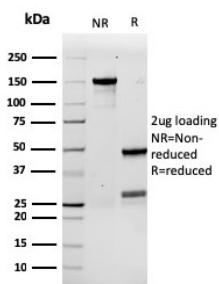
### Images:



Immunohistochemical analysis of formalin-fixed, paraffin-embedded human tonsil using Anti-G-CSF Antibody [rCSF3/900].



Immunohistochemical analysis of formalin-fixed, paraffin-embedded human tonsil using Anti-G-CSF Antibody [rCSF3/900].



SDS-PAGE analysis of Anti-G-CSF Antibody [rCSF3/900] under non-reduced and reduced conditions; showing intact IgG and intact heavy and light chains, respectively. SDS-PAGE analysis confirms the integrity and purity of the antibody.