

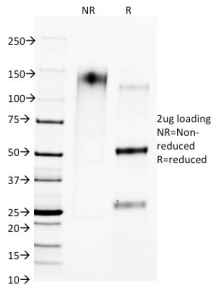
Anti-CTLA4 Antibody [L4P2F5.F10] - BSA and Azide free (A251469)

Specifications:

Name:	Anti-CTLA4 Antibody [L4P2F5.F10] - BSA and Azide free
Description:	Mouse monoclonal [L4P2F5.F10] antibody to CTLA4.
Applications:	Flow Cytometry, IF, WB
Recommended Dilutions:	Flow Cytometry: 1-2 µg/million cells, IF: 1-2 µg/ml, WB: 1-2 µg/ml
Reactivity:	Huma, Bovine, Mouse, Rat
Immunogen:	A synthetic peptide from CTLA4. The exact sequence is proprietary.
Host:	Mouse
Clonality:	Monoclonal
Clone ID:	L4P2F5.F10
Isotype:	IgG1
Light Chains:	kappa
Conjugate:	Unconjugated
Purification:	Protein A/G chromatography.
Concentration:	1 mg/ml
Product Form:	Liquid
Formulation:	Supplied in 10mM Phosphate Buffered Saline; without Sodium Azide and carrier free.
Storage:	Shipped at 4°C. Upon delivery aliquot and store at -20°C. Avoid freeze / thaw cycles.
General Notes:	This monoclonal antibody is also available in a different formulation with BSA and Sodium Azide - Anti-CTLA4 Antibody [L4P2F5.F10] (A248287).
Disclaimer:	This product is for research use only. It is not intended for diagnostic or therapeutic use.

Anti-CTLA4 Antibody [L4P2F5.F10] - BSA and Azide free (A251469)

Images:



SDS-PAGE analysis of Anti-CTLA4 Antibody [L4P2F5.F10] under non-reduced and reduced conditions; showing intact IgG and intact heavy and light chains, respectively. SDS-PAGE analysis confirms the integrity and purity of the antibody.