

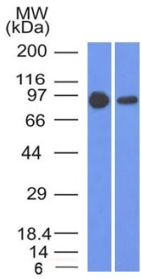
Anti-beta Catenin Antibody [5H10] - BSA and Azide free (A251477)

Specifications:

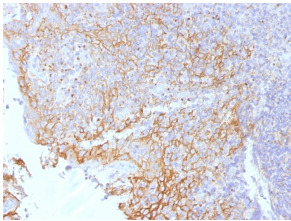
Name:	Anti-beta Catenin Antibody [5H10] - BSA and Azide free
Description:	Mouse monoclonal [5H10] antibody to beta Catenin.
Applications:	Flow Cytometry, IF, WB, IHC-P
Recommended Dilutions:	Flow Cytometry: 1-2 µg/million cells, IF: 1-2 µg/ml, WB: 1-2 µg/ml, IHC-P: 1-2 µg/ml
Reactivity:	Human, Mouse, Chicken
Immunogen:	Fusion protein consisting of the maltose binding protein fused to a 100 amino acid segment of the C terminus of chicken beta Catenin.
Host:	Mouse
Clonality:	Monoclonal
Clone ID:	5H10
Isotype:	IgG1
Light Chains:	kappa
Conjugate:	Unconjugated
Purification:	Protein A/G chromatography.
Concentration:	1 mg/ml
Product Form:	Liquid
Formulation:	Supplied in 10mM Phosphate Buffered Saline; without Sodium Azide and carrier free.
Storage:	Shipped at 4°C. Upon delivery aliquot and store at -20°C. Avoid freeze / thaw cycles.
General Notes:	This monoclonal antibody is also available in a different formulation with BSA and Sodium Azide - Anti-beta Catenin Antibody [5H10] (A248295).
Disclaimer:	This product is for research use only. It is not intended for diagnostic or therapeutic use.

Anti-beta Catenin Antibody [5H10] - BSA and Azide free (A251477)

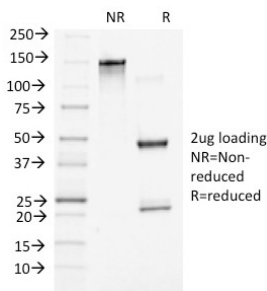
Images:



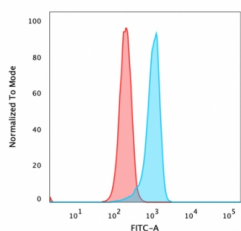
Western blot analysis of A431 and A549 cell lysates using Anti-beta Catenin Antibody [5H10].



Immunohistochemical analysis of formalin-fixed, paraffin-embedded human tonsil using Anti-beta Catenin Antibody [5H10].



SDS-PAGE analysis of Anti-beta Catenin Antibody [5H10] under non-reduced and reduced conditions; showing intact IgG and intact heavy and light chains, respectively. SDS-PAGE analysis confirms the integrity and purity of the antibody.



Flow cytometric analysis of PFA fixed HeLa cells using Anti-beta Catenin Antibody [5H10] followed by Goat Anti-Mouse IgG (CF® 488) (Blue). Isotype Control (Red).