

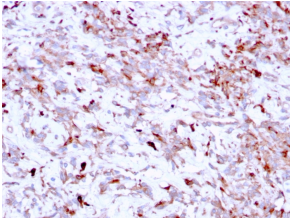
Anti-Cathepsin K Antibody [CTSK/2791] - BSA and Azide free (A251491)

Specifications:

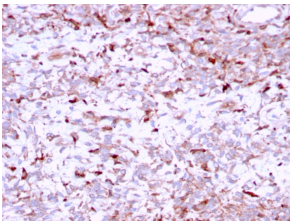
| | |
|------------------------|--|
| Name: | Anti-Cathepsin K Antibody [CTSK/2791] - BSA and Azide free |
| Description: | Mouse monoclonal [CTSK/2791] antibody to Cathepsin K. |
| Specificity: | The protein encoded by this gene is a lysosomal cysteine proteinase involved in bone remodeling and resorption. This protein, which is a member of the peptidase C1 protein family, is predominantly expressed in osteoclasts. However, the encoded protein is also expressed in a significant fraction of human breast cancers, where it could contribute to tumor invasiveness. Mutations in this gene are the cause of pycnodysostosis, an autosomal recessive disease characterized by osteosclerosis and short stature. |
| Applications: | IHC-P |
| Recommended Dilutions: | IHC-P: 1-2 µg/ml |
| Reactivity: | Human |
| Immunogen: | Recombinant fragment, around amino acids 163-274, of human Cathepsin K protein. The exact sequence is proprietary. |
| Host: | Mouse |
| Clonality: | Monoclonal |
| Clone ID: | CTSK/2791 |
| Isotype: | IgG1 |
| Light Chains: | kappa |
| Conjugate: | Unconjugated |
| Purification: | Protein A/G chromatography. |
| Concentration: | 1 mg/ml |
| Product Form: | Liquid |
| Formulation: | Supplied in 10mM Phosphate Buffered Saline; without Sodium Azide and carrier free. |
| Storage: | Shipped at 4°C. Upon delivery aliquot and store at -20°C. Avoid freeze / thaw cycles. |
| General Notes: | This monoclonal antibody is also available in a different formulation with BSA and Sodium Azide - Anti-Cathepsin K Antibody [CTSK/2791] (A248309). |
| Disclaimer: | This product is for research use only. It is not intended for diagnostic or therapeutic use. |

Anti-Cathepsin K Antibody [CTSK/2791] - BSA and Azide free (A251491)

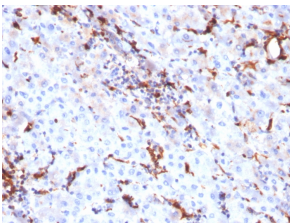
Images:



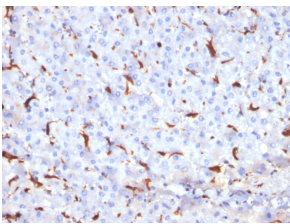
Immunohistochemical analysis of formalin-fixed, paraffin-embedded human liver carcinoma using Anti-Cathepsin K Antibody [CTSK/2791].



Immunohistochemical analysis of formalin-fixed, paraffin-embedded human liver carcinoma using Anti-Cathepsin K Antibody [CTSK/2791].



Immunohistochemical analysis of formalin-fixed, paraffin-embedded human liver using Anti-Cathepsin K Antibody [CTSK/2791].



Immunohistochemical analysis of formalin-fixed, paraffin-embedded human liver using Anti-Cathepsin K Antibody [CTSK/2791].