

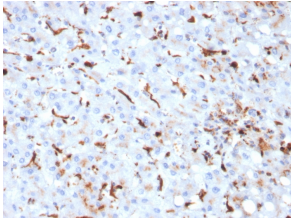
Anti-Cathepsin K Antibody [CTSK/2793] - BSA and Azide free (A251493)

Specifications:

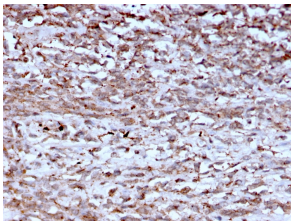
Name:	Anti-Cathepsin K Antibody [CTSK/2793] - BSA and Azide free
Description:	Mouse monoclonal [CTSK/2793] antibody to Cathepsin K.
Specificity:	The protein encoded by this gene is a lysosomal cysteine proteinase involved in bone remodeling and resorption. This protein, which is a member of the peptidase C1 protein family, is predominantly expressed in osteoclasts. However, the encoded protein is also expressed in a significant fraction of human breast cancers, where it could contribute to tumor invasiveness. Mutations in this gene are the cause of pycnodysostosis, an autosomal recessive disease characterized by osteosclerosis and short stature.
Applications:	IHC-P
Recommended Dilutions:	IHC-P: 1-2 µg/ml
Reactivity:	Human
Immunogen:	Recombinant fragment, around amino acids 163-274, of human Cathepsin K protein. The exact sequence is proprietary.
Host:	Mouse
Clonality:	Monoclonal
Clone ID:	CTSK/2793
Isotype:	IgG1
Light Chains:	kappa
Conjugate:	Unconjugated
Purification:	Protein A/G chromatography.
Concentration:	1 mg/ml
Product Form:	Liquid
Formulation:	Supplied in 10mM Phosphate Buffered Saline; without Sodium Azide and carrier free.
Storage:	Shipped at 4°C. Upon delivery aliquot and store at -20°C. Avoid freeze / thaw cycles.
General Notes:	This monoclonal antibody is also available in a different formulation with BSA and Sodium Azide - Anti-Cathepsin K Antibody [CTSK/2793] (A248311).
Disclaimer:	This product is for research use only. It is not intended for diagnostic or therapeutic use.

Anti-Cathepsin K Antibody [CTSK/2793] - BSA and Azide free (A251493)

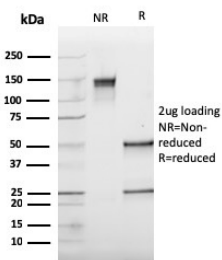
Images:



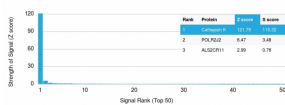
Immunohistochemical analysis of formalin-fixed, paraffin-embedded human liver using Anti-Cathepsin K Antibody [CTSK/2793].



Immunohistochemical analysis of formalin-fixed, paraffin-embedded human hepatocellular carcinoma using Anti-Cathepsin K Antibody [CTSK/2793].



SDS-PAGE analysis of Anti-Cathepsin K Antibody [CTSK/2793] under non-reduced and reduced conditions; showing intact IgG and intact heavy and light chains, respectively. SDS-PAGE analysis confirms the integrity and purity of the antibody.



Analysis of protein array containing more than 19,000 full-length human proteins using Anti-Cathepsin K Antibody [CTSK/2793]. Z-Score and S-Score: The Z-score represents the strength of a signal that a monoclonal antibody (MAb) (in combination with a fluorescently-tagged anti-IgG secondary antibody) produces when binding to a particular protein on the HuProt™ array. Z-scores are described in units of standard deviations (SD's) above the mean value of all signals generated on that array. If targets on HuProt™ are arranged in descending order of the Z-score, the S-score is the difference (also in units of SD's) between the Z-score. S-score therefore represents the relative target specificity of a MAb to its intended target; a MAb is considered to be specific to its intended target, if the MAb has an S-score of at least 2.5. For example, if a MAb binds to protein X with a Z-score of 43 and to protein Y with a Z-score of 14, then the S-score for the binding of that MAb to protein X is equal to 29.