

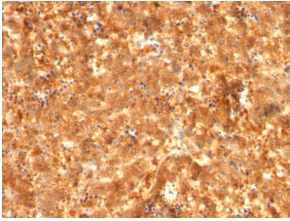
Anti-alpha Fetoprotein Antibody [C2 + C3 + MBS-12] - BSA and Azide free (A251519)

Specifications:

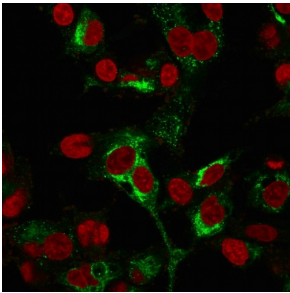
Name:	Anti-alpha Fetoprotein Antibody [C2 + C3 + MBS-12] - BSA and Azide free
Description:	Mouse monoclonal [C2 + C3 + MBS-12] antibody to alpha Fetoprotein.
Specificity:	This antibody is highly specific to AFP and shows no cross-reaction with other oncofetal antigens or serum albumin.
Applications:	IF, IHC-P
Recommended Dilutions:	IF: 1-2 µg/ml, IHC-P: 1-2 µg/ml
Reactivity:	Human
Immunogen:	Recombinant full-length human alpha Fetoprotein.
Host:	Mouse
Clonality:	Monoclonal
Clone ID:	C2 + C3 + MBS-12
Isotype:	IgG1
Light Chains:	kappa
Conjugate:	Unconjugated
Purification:	Protein A/G chromatography.
Concentration:	1 mg/ml
Product Form:	Liquid
Formulation:	Supplied in 10mM Phosphate Buffered Saline; without Sodium Azide and carrier free.
Storage:	Shipped at 4°C. Upon delivery aliquot and store at -20°C. Avoid freeze / thaw cycles.
General Notes:	This monoclonal antibody is also available in a different formulation with BSA and Sodium Azide - Anti-alpha Fetoprotein Antibody [C2 + C3 + MBS-12] (A248337).
Disclaimer:	This product is for research use only. It is not intended for diagnostic or therapeutic use.

Anti-alpha Fetoprotein Antibody [C2 + C3 + MBS-12] - BSA and Azide free (A251519)

Images:



Immunohistochemical analysis of formalin-fixed, paraffin-embedded human fetal liver using Anti-alpha Fetoprotein Antibody [C2 + C3 + MBS-12].



Immunofluorescent analysis of PFA fixed HepG2 cells stained with Anti-alpha Fetoprotein Antibody [C2 + C3 + MBS-12] followed by Goat Anti-Mouse IgG (CF® 488) (Green). The nuclear counterstain is RedDot.