

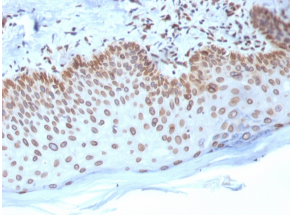
Anti-Emerin Antibody [EMD/2168] - BSA and Azide free (A251608)

Specifications:

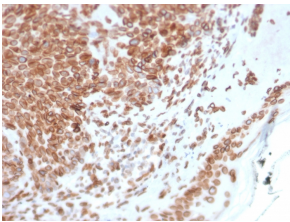
Name:	Anti-Emerin Antibody [EMD/2168] - BSA and Azide free
Description:	Mouse monoclonal [EMD/2168] antibody to Emerin.
Applications:	WB, IHC-P
Recommended Dilutions:	WB: 1-2 µg/ml, IHC-P: 1-2 µg/ml
Reactivity:	Human
Immunogen:	Recombinant fragment, around amino acids 56-167, of human Emerin protein. The exact sequence is proprietary.
Host:	Mouse
Clonality:	Monoclonal
Clone ID:	EMD/2168
Isotype:	IgG2b
Light Chains:	kappa
Conjugate:	Unconjugated
Purification:	Protein A/G chromatography.
Concentration:	1 mg/ml
Product Form:	Liquid
Formulation:	Supplied in 10mM Phosphate Buffered Saline; without Sodium Azide and carrier free.
Storage:	Shipped at 4°C. Upon delivery aliquot and store at -20°C. Avoid freeze / thaw cycles.
General Notes:	This monoclonal antibody is also available in a different formulation with BSA and Sodium Azide - Anti-Emerin Antibody [EMD/2168] (A248426).
Disclaimer:	This product is for research use only. It is not intended for diagnostic or therapeutic use.

Anti-Emerin Antibody [EMD/2168] - BSA and Azide free (A251608)

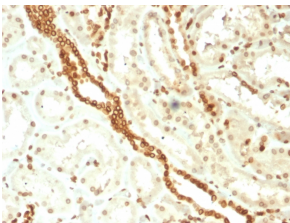
Images:



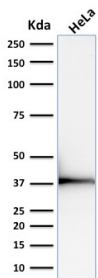
Immunohistochemical analysis of formalin-fixed, paraffin-embedded human breast carcinoma using Anti-Emerin Antibody [EMD/2168].



Immunohistochemical analysis of formalin-fixed, paraffin-embedded human basal cell carcinoma using Anti-Emerin Antibody [EMD/2168].



Immunohistochemical analysis of formalin-fixed, paraffin-embedded human renal cell carcinoma using Anti-Emerin Antibody [EMD/2168].



Western blot analysis of human HeLa cell lysate using Anti-Emerin Antibody [EMD/2168].