

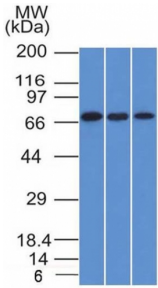
Anti-CD105 Antibody [ENG/1326] - BSA and Azide free (A251612)

Specifications:

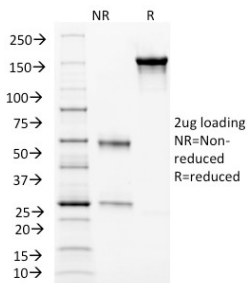
Name:	Anti-CD105 Antibody [ENG/1326] - BSA and Azide free
Description:	Mouse monoclonal [ENG/1326] antibody to CD105.
Specificity:	This antibody is a specific and sensitive marker for tumor angiogenesis as it labels only newly-formed blood vessels and may serve as a prognostic marker for Prostate Adenocarcinoma, and cancers of the lung, stomach, breast, and brain.
Applications:	Flow Cytometry, IF, WB
Recommended Dilutions:	Flow Cytometry: 0.5-1 µg/million cells, IF: 1-2 µg/ml, WB: 1-2 µg/ml
Reactivity:	Human
Immunogen:	Recombinant fragment, around amino acids 74-251, of human Endoglin protein. The exact sequence is proprietary.
Host:	Mouse
Clonality:	Monoclonal
Clone ID:	ENG/1326
Isotype:	IgG1
Light Chains:	kappa
Conjugate:	Unconjugated
Purification:	Protein A/G chromatography.
Concentration:	1 mg/ml
Product Form:	Liquid
Formulation:	Supplied in 10mM Phosphate Buffered Saline; without Sodium Azide and carrier free.
Storage:	Shipped at 4°C. Upon delivery aliquot and store at -20°C. Avoid freeze / thaw cycles.
General Notes:	This monoclonal antibody is also available in a different formulation with BSA and Sodium Azide - Anti-CD105 Antibody [ENG/1326] (A248430).
Disclaimer:	This product is for research use only. It is not intended for diagnostic or therapeutic use.

Anti-CD105 Antibody [ENG/1326] - BSA and Azide free (A251612)

Images:



Western blot analysis of HeLa, A431, and HL-60 cell lysates using Anti-CD105 Antibody [ENG/1326].



SDS-PAGE analysis of Anti-CD105 Antibody [ENG/1326] under non-reduced and reduced conditions; showing intact IgG and intact heavy and light chains, respectively. SDS-PAGE analysis confirms the integrity and purity of the antibody.