

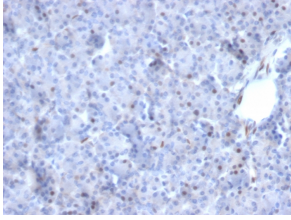
## Anti-AKT1 Antibody [AKT1/2784] - BSA and Azide free (A251650)

### Specifications:

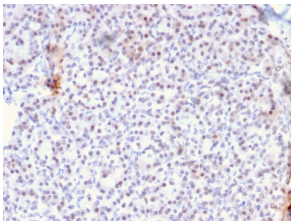
Name:	Anti-AKT1 Antibody [AKT1/2784] - BSA and Azide free
Description:	Mouse monoclonal [AKT1/2784] antibody to AKT1.
Specificity:	This antibody recognizes a protein of 62kDa, which is identified as AKT1. The serine/threonine kinase Akt family contains several members, including Akt1 (also designated PKB or RacPK), Akt2 (also designated PKB tyrosine residues 740 and 751, which bind the subunit of the phosphatidylinositol 3-kinase (PI 3-kinase) complex. Activation of Akt1 by insulin or insulin-growth factor-1 (IGF-1) results in phosphorylation of both Thr 308 and Ser 473. Akt proteins become phosphorylated and activated in insulin/IGF-1-stimulated cells by an upstream kinase(s), and the activation of Akt1 and Akt2 is inhibited by the PI kinase inhibitor wortmannin.
Applications:	WB, IHC-P
Recommended Dilutions:	WB: 1-2 µg/ml, IHC-P: 1-2 µg/ml
Reactivity:	Human, Mouse
Immunogen:	Recombinant fragment, around amino acids 85-189, of human AKT1 protein. The exact sequence is proprietary.
Host:	Mouse
Clonality:	Monoclonal
Clone ID:	AKT1/2784
Isotype:	IgG
Conjugate:	Unconjugated
Purification:	Protein A/G chromatography.
Concentration:	1 mg/ml
Product Form:	Liquid
Formulation:	Supplied in 10mM Phosphate Buffered Saline; without Sodium Azide and carrier free.
Storage:	Shipped at 4°C. Upon delivery aliquot and store at -20°C. Avoid freeze / thaw cycles.
General Notes:	This monoclonal antibody is also available in a different formulation with BSA and Sodium Azide - Anti-AKT1 Antibody [AKT1/2784] (A248468).
Disclaimer:	This product is for research use only. It is not intended for diagnostic or therapeutic use.

# Anti-AKT1 Antibody [AKT1/2784] - BSA and Azide free (A251650)

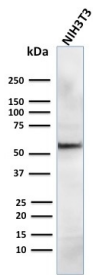
Images:



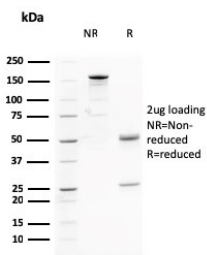
Immunohistochemical analysis of formalin-fixed, paraffin-embedded human pancreas using Anti-AKT1 Antibody [AKT1/2784].



Immunohistochemical analysis of formalin-fixed, paraffin-embedded human pancreas using Anti-AKT1 Antibody [AKT1/2784].



Western blot analysis of human NIH3T3 cell lysate using Anti-AKT1 Antibody [AKT1/2784].



SDS-PAGE analysis of Anti-AKT1 Antibody [AKT1/2784] under non-reduced and reduced conditions; showing intact IgG and intact heavy and light chains, respectively. SDS-PAGE analysis confirms the integrity and purity of the antibody.