

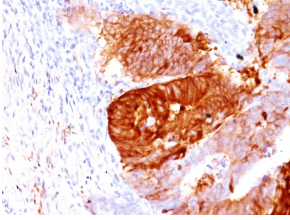
Anti-ALDH1A1 Antibody [ALDH1A1/1381] - BSA and Azide free (A251704)

Specifications:

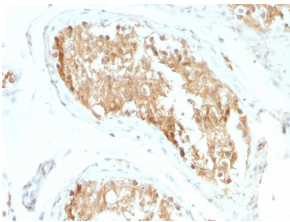
Name:	Anti-ALDH1A1 Antibody [ALDH1A1/1381] - BSA and Azide free
Description:	Mouse monoclonal [ALDH1A1/1381] antibody to ALDH1A1.
Applications:	WB, IHC-P
Recommended Dilutions:	WB: 1-2 µg/ml, IHC-P: 1-2 µg/ml
Reactivity:	Human
Immunogen:	Recombinant fragment, around amino acids 315-434, of human ALDH1A1 protein. The exact sequence is proprietary.
Host:	Mouse
Clonality:	Monoclonal
Clone ID:	ALDH1A1/1381
Isotype:	IgG1
Light Chains:	kappa
Conjugate:	Unconjugated
Purification:	Protein A/G chromatography.
Concentration:	1 mg/ml
Product Form:	Liquid
Formulation:	Supplied in 10mM Phosphate Buffered Saline; without Sodium Azide and carrier free.
Storage:	Shipped at 4°C. Upon delivery aliquot and store at -20°C. Avoid freeze / thaw cycles.
General Notes:	This monoclonal antibody is also available in a different formulation with BSA and Sodium Azide - Anti-ALDH1A1 Antibody [ALDH1A1/1381] (A248522).
Disclaimer:	This product is for research use only. It is not intended for diagnostic or therapeutic use.

Anti-ALDH1A1 Antibody [ALDH1A1/1381] - BSA and Azide free (A251704)

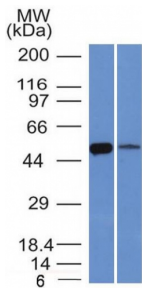
Images:



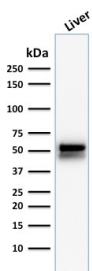
Immunohistochemical analysis of formalin-fixed, paraffin-embedded human colon carcinoma using Anti-ALDH1A1 Antibody [ALDH1A1/1381].



Immunohistochemical analysis of formalin-fixed, paraffin-embedded human testicular carcinoma using Anti-ALDH1A1 Antibody [ALDH1A1/1381].



Western blot analysis of K562 cell and lung tissue lysates using Anti-ALDH1A1 Antibody [ALDH1A1/1381].



Western blot analysis of human liver tissue lysate using Anti-ALDH1A1 Antibody [ALDH1A1/1381].