

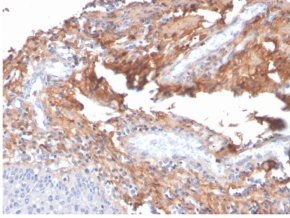
Anti-Fibronectin Antibody [C6F10] - BSA and Azide free (A251765)

Specifications:

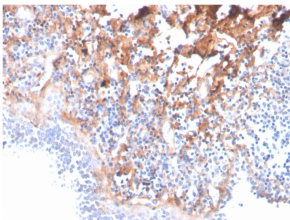
Name:	Anti-Fibronectin Antibody [C6F10] - BSA and Azide free
Description:	Mouse monoclonal [C6F10] antibody to Fibronectin.
Applications:	IP, WB, IF, IHC-P
Recommended Dilutions:	IP: 1-2 µg / 500 µg protein lysate, WB: 1-2 µg/ml, IF: 1-2 µg/ml, IHC-P: 1-2 µg/ml
Reactivity:	Human, Monkey, Porcine, Bovine, Equine, Avian, Amphibian
Immunogen:	Human plasma fibronectin.
Host:	Mouse
Clonality:	Monoclonal
Clone ID:	C6F10
Isotype:	IgG1
Light Chains:	kappa
Conjugate:	Unconjugated
Purification:	Protein A/G chromatography.
Concentration:	1 mg/ml
Product Form:	Liquid
Formulation:	Supplied in 10mM Phosphate Buffered Saline; without Sodium Azide and carrier free.
Storage:	Shipped at 4°C. Upon delivery aliquot and store at -20°C. Avoid freeze / thaw cycles.
General Notes:	This monoclonal antibody is also available in a different formulation with BSA and Sodium Azide - Anti-Fibronectin Antibody [C6F10] (A248583).
Disclaimer:	This product is for research use only. It is not intended for diagnostic or therapeutic use.

Anti-Fibronectin Antibody [C6F10] - BSA and Azide free (A251765)

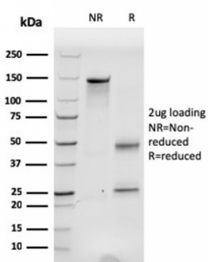
Images:



Immunohistochemical analysis of formalin-fixed, paraffin-embedded human tonsil using Anti-Fibronectin Antibody [C6F10].



Immunohistochemical analysis of formalin-fixed, paraffin-embedded human tonsil using Anti-Fibronectin Antibody [C6F10].



SDS-PAGE analysis of Anti-Fibronectin Antibody [C6F10] under non-reduced and reduced conditions; showing intact IgG and intact heavy and light chains, respectively. SDS-PAGE analysis confirms the integrity and purity of the antibody.