

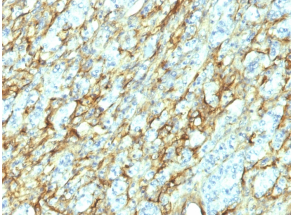
## Anti-Fibronectin Antibody [568] - BSA and Azide free (A251771)

### Specifications:

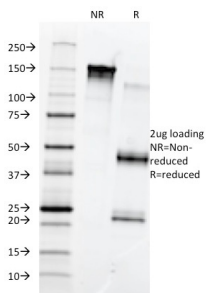
Name:	Anti-Fibronectin Antibody [568] - BSA and Azide free
Description:	Mouse monoclonal [568] antibody to Fibronectin.
Specificity:	The epitope of this antibody is located in the 8th type III repeat in the cell-binding region of Fibronectin.
Applications:	Flow Cytometry, IF, IHC-P
Recommended Dilutions:	Flow Cytometry: 1-2 µg/million cells, IF: 1-2 µg/ml, IHC-P: 1-2 µg/ml
Reactivity:	Human
Immunogen:	High molecular weight proteins secreted by cultivated human fibroblasts.
Host:	Mouse
Clonality:	Monoclonal
Clone ID:	568
Isotype:	IgG1
Light Chains:	kappa
Conjugate:	Unconjugated
Purification:	Protein A/G chromatography.
Concentration:	1 mg/ml
Product Form:	Liquid
Formulation:	Supplied in 10mM Phosphate Buffered Saline; without Sodium Azide and carrier free.
Storage:	Shipped at 4°C. Upon delivery aliquot and store at -20°C. Avoid freeze / thaw cycles.
General Notes:	This monoclonal antibody is also available in a different formulation with BSA and Sodium Azide - Anti-Fibronectin Antibody [568] (A248589).
Disclaimer:	This product is for research use only. It is not intended for diagnostic or therapeutic use.

## Anti-Fibronectin Antibody [568] - BSA and Azide free (A251771)

### Images:



Immunohistochemical analysis of formalin-fixed, paraffin-embedded human renal cell carcinoma using Anti-Fibronectin Antibody [568].



SDS-PAGE analysis of Anti-Fibronectin Antibody [568] under non-reduced and reduced conditions; showing intact IgG and intact heavy and light chains, respectively. SDS-PAGE analysis confirms the integrity and purity of the antibody.