

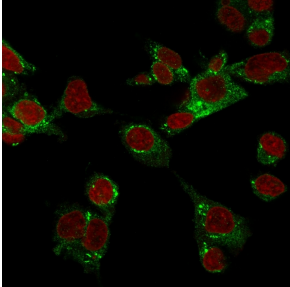
Anti-GPX4 Antibody [LHM 2] - BSA and Azide free (A251935)

Specifications:

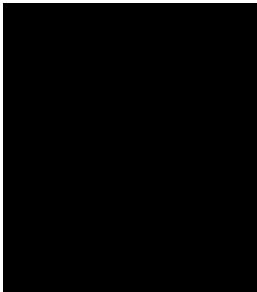
Name:	Anti-GPX4 Antibody [LHM 2] - BSA and Azide free
Description:	Mouse monoclonal [LHM 2] antibody to GPX4.
Applications:	ELISA, Flow Cytometry, IF, IHC-P
Recommended Dilutions:	Flow Cytometry: 1-2 µg/million cells, IF: 1-2 µg/ml, IHC-P: 1-2 µg/ml
Reactivity:	Human, Mouse, Rat
Immunogen:	A 375P cells crude extract.
Host:	Mouse
Clonality:	Monoclonal
Clone ID:	LHM 2
Isotype:	IgG1
Light Chains:	kappa
Conjugate:	Unconjugated
Purification:	Protein A/G chromatography.
Concentration:	1 mg/ml
Product Form:	Liquid
Formulation:	Supplied in 10mM Phosphate Buffered Saline; without Sodium Azide and carrier free.
Storage:	Shipped at 4°C. Upon delivery aliquot and store at -20°C. Avoid freeze / thaw cycles.
General Notes:	This monoclonal antibody is also available in a different formulation with BSA and Sodium Azide - Anti-GPX4 Antibody [LHM 2] (A248755).
Disclaimer:	This product is for research use only. It is not intended for diagnostic or therapeutic use.

Anti-GPX4 Antibody [LHM 2] - BSA and Azide free (A251935)

Images:



Immunofluorescent analysis of HePG2 cells stained with Anti-GPX4 Antibody [LHM 2] followed by Goat Anti-Mouse IgG (CF@ 488) (Green). Nuclei are stained with RedDot.



SDS-PAGE analysis of Anti-GPX4 Antibody [LHM 2] under non-reduced and reduced conditions; showing intact IgG and intact heavy and light chains, respectively. SDS-PAGE analysis confirms the integrity and purity of the antibody.