

Anti-MSH6 Antibody [MSH6/3091] - BSA and Azide free (A251960)

Specifications:

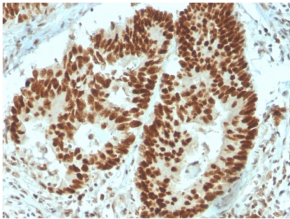
Name:	Anti-MSH6 Antibody [MSH6/3091] - BSA and Azide free
Description:	Mouse monoclonal [MSH6/3091] antibody to MSH6.
Specificity:	The finding that mutations in DNA mismatch repair genes are associated with hereditary nonpolyposis colorectal cancer (HNPCC) has resulted in considerable interest in the understanding of the mechanism of DNA mismatch repair. Initially, inherited mutations in the MSH2 and MLH1 homologs of the bacterial DNA mismatch repair genes mutS and mutL were demonstrated at high frequency in HNPCC and were shown to be associated with microsatellite instability. A member of the mismatch repair family, GTBP (also designated MSH6), is an MSH2-related protein that binds to DNA containing G/T mismatches. Findings suggest that the mismatch-binding factor in human cells is composed of a heterodimer of GTBP and MSH2.
Applications:	ELISA, IF, WB, IHC-P
Recommended Dilutions:	IF: 1-2 µg/ml, WB: 1-2 µg/ml, IHC-P: 1-2 µg/ml
Reactivity:	Human
Immunogen:	Recombinant fragment, around amino acids 374-540, of human MSH6 protein. The exact sequence is proprietary.
Host:	Mouse
Clonality:	Monoclonal
Clone ID:	MSH6/3091
Isotype:	IgG2b
Light Chains:	kappa
Conjugate:	Unconjugated
Purification:	Protein A/G chromatography.
Concentration:	1 mg/ml
Product Form:	Liquid
Formulation:	Supplied in 10mM Phosphate Buffered Saline; without Sodium Azide and carrier free.
Storage:	Shipped at 4°C. Upon delivery aliquot and store at -20°C. Avoid freeze / thaw cycles.
General Notes:	This monoclonal antibody is also available in a different formulation with BSA and Sodium Azide - Anti-MSH6 Antibody [MSH6/3091] (A248780).

Anti-MSH6 Antibody [MSH6/3091] - BSA and Azide free (A251960)

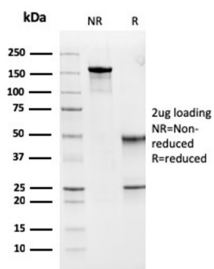
Specifications continued:

Disclaimer: This product is for research use only. It is not intended for diagnostic or therapeutic use.

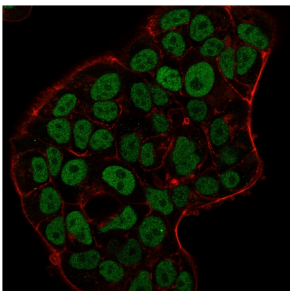
Images:



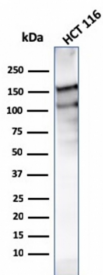
Immunohistochemical analysis of formalin-fixed, paraffin-embedded human colon carcinoma using Anti-MSH6 Antibody [MSH6/3091].



SDS-PAGE analysis of Anti-MSH6 Antibody [MSH6/3091] under non-reduced and reduced conditions; showing intact IgG and intact heavy and light chains, respectively. SDS-PAGE analysis confirms the integrity and purity of the antibody.



Immunofluorescent analysis of MCF-7 cells stained with Anti-MSH6 Antibody [MSH6/3091] followed by Goat Anti-Mouse IgG (CF® 488) (Green). Nuclei are stained with RedDot.



Western blot analysis of HCT116 cell lysate using Anti-MSH6 Antibody [MSH6/3091].