

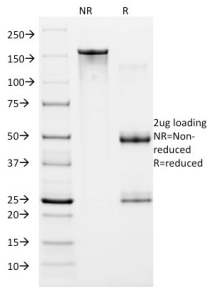
Anti-HIF1 alpha Antibody [ESEE122] - BSA and Azide free (A252008)

Specifications:

Name:	Anti-HIF1 alpha Antibody [ESEE122] - BSA and Azide free
Description:	Mouse monoclonal [ESEE122] antibody to HIF1 alpha.
Applications:	ELISA, Flow Cytometry, IF
Recommended Dilutions:	Flow Cytometry: 1-2 µg/million cells, IF: 1-2 µg/ml
Reactivity:	Huma, Bovine, Canine, Mouse, Rat
Immunogen:	GST-human HIF1 alpha, amino acids 329-530, fusion protein.
Host:	Mouse
Clonality:	Monoclonal
Clone ID:	ESEE122
Isotype:	IgG1
Light Chains:	kappa
Conjugate:	Unconjugated
Purification:	Protein A/G chromatography.
Concentration:	1 mg/ml
Product Form:	Liquid
Formulation:	Supplied in 10mM Phosphate Buffered Saline; without Sodium Azide and carrier free.
Storage:	Shipped at 4°C. Upon delivery aliquot and store at -20°C. Avoid freeze / thaw cycles.
General Notes:	This monoclonal antibody is also available in a different formulation with BSA and Sodium Azide - Anti-HIF1 alpha Antibody [ESEE122] (A248828).
Disclaimer:	This product is for research use only. It is not intended for diagnostic or therapeutic use.

Anti-HIF1 alpha Antibody [ESEE122] - BSA and Azide free (A252008)

Images:



SDS-PAGE analysis of Anti-HIF1 alpha Antibody [ESEE122] under non-reduced and reduced conditions; showing intact IgG and intact heavy and light chains, respectively. SDS-PAGE analysis confirms the integrity and purity of the antibody.