

## Anti-ICAM1 Antibody [W-CAM-1] - BSA and Azide free (A252082)

### Specifications:

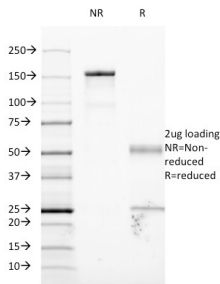
Name:	Anti-ICAM1 Antibody [W-CAM-1] - BSA and Azide free
Description:	Mouse monoclonal [W-CAM-1] antibody to ICAM1.
Specificity:	This antibody recognizes an 85-115kDa protein (variation with cell type), identified as intercellular adhesion molecule (ICAM-1) (Workshop IV). It has 7 potential N-linked glycosylation sites. ICAM-1 is a single chain glycoprotein of Ig supergene family, present on unstimulated endothelial cells (EC) and on a variety of other cell types including activated fibroblasts, EC, macrophages, and lymphocytes. ICAM-1 mediates cell adhesion by binding to integrins CD11a/CD18 (leukocyte adhesion molecule, LFA-1) and to CD11b/CD18 (Mac-1). This interaction enhances antigen-specific T-cell activation. ICAM-1 also binds to CD43 and to Plasmodium falciparum infected RBCs. W-CAM-1 MAb blocks aggregation of cell lines mediated by the ICAM-1 and blocks homotypic binding of Purified populations of activated T- and B-lymphocytes and also aggregation of mixed T- and B-cell blasts. It inhibits T-cell adhesion to normal human endothelial cells. Activation induced by cell-cell contact (mixed lymphocyte reaction, T-cell mediated B-cell activation) is significantly inhibited. This MAb blocks elements of both effector arms of immune system (cytotoxic cell function and Ig production).
Applications:	Functional Studies, Flow Cytometry, IHC-P
Recommended Dilutions:	Flow Cytometry: 1-2 µg/million cells, IHC-P: 1-2 µg/ml, IF: 1-2 µg/ml
Reactivity:	Human
Immunogen:	Raji Burkitt lymphoma cells.
Host:	Mouse
Clonality:	Monoclonal
Clone ID:	W-CAM-1
Isotype:	IgG2b
Light Chains:	kappa
Conjugate:	Unconjugated
Purification:	Protein A/G chromatography.
Concentration:	1 mg/ml
Product Form:	Liquid
Formulation:	Supplied in 10mM Phosphate Buffered Saline; without Sodium Azide and carrier free.

## Anti-ICAM1 Antibody [W-CAM-1] - BSA and Azide free (A252082)

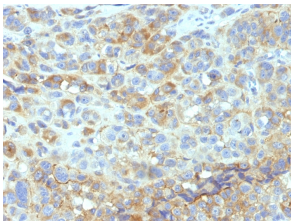
### Specifications continued:

Storage:	Shipped at 4°C. Upon delivery aliquot and store at -20°C. Avoid freeze / thaw cycles.
General Notes:	This antibody is also known as Clone Wehi-CAM-1 and Clone 1H4. This monoclonal antibody is also available in a different formulation with BSA and Sodium Azide - Anti-ICAM1 Antibody [W-CAM-1] (A248902).
Disclaimer:	This product is for research use only. It is not intended for diagnostic or therapeutic use.

### Images:



SDS-PAGE analysis of Anti-ICAM1 Antibody [W-CAM-1] under non-reduced and reduced conditions; showing intact IgG and intact heavy and light chains, respectively. SDS-PAGE analysis confirms the integrity and purity of the antibody.



Immunohistochemical analysis of formalin-fixed, paraffin-embedded human melanoma using Anti-ICAM1 Antibody [W-CAM-1].