

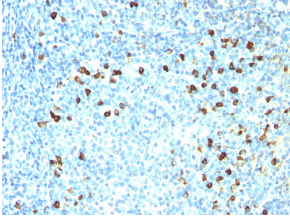
## Anti-Kappa Light Chain Antibody [SPM558] - BSA and Azide free (A252158)

### Specifications:

Name:	Anti-Kappa Light Chain Antibody [SPM558] - BSA and Azide free
Description:	Mouse monoclonal [SPM558] antibody to Kappa Light Chain.
Specificity:	This antibody is specific to kappa light chain of immunoglobulin and shows no cross-reaction with lambda light chain or any of the five heavy chains. In mammals, the two light chains in an antibody are always identical, with only one type of light chain, kappa or lambda. The ratio of Kappa to Lambda is 70:30. However, with the occurrence of multiple myeloma or other B-cell malignancies this ratio is disturbed. Antibody to the kappa light chain is reportedly useful in the identification of leukemias, plasmacytomas, and certain non-Hodgkins lymphomas. Demonstration of clonality in lymphoid infiltrates indicates that the infiltrate is malignant.
Applications:	Flow Cytometry, IHC-P
Recommended Dilutions:	Flow Cytometry: 1-2 µg/million cells, IHC-P: 1-2 µg/ml
Reactivity:	Human
Immunogen:	Recombinant human Ig kappa chain.
Host:	Mouse
Clonality:	Monoclonal
Clone ID:	SPM558
Isotype:	IgG1
Light Chains:	kappa
Conjugate:	Unconjugated
Purification:	Protein A/G chromatography.
Concentration:	1 mg/ml
Product Form:	Liquid
Formulation:	Supplied in 10mM Phosphate Buffered Saline; without Sodium Azide and carrier free.
Storage:	Shipped at 4°C. Upon delivery aliquot and store at -20°C. Avoid freeze / thaw cycles.
General Notes:	This monoclonal antibody is also available in a different formulation with BSA and Sodium Azide - Anti-Kappa Light Chain Antibody [SPM558] (A248978).
Disclaimer:	This product is for research use only. It is not intended for diagnostic or therapeutic use.

## Anti-Kappa Light Chain Antibody [SPM558] - BSA and Azide free (A252158)

Images:



Immunohistochemical analysis of formalin-fixed, paraffin-embedded human tonsil using Anti-Kappa Light Chain Antibody [SPM558].