

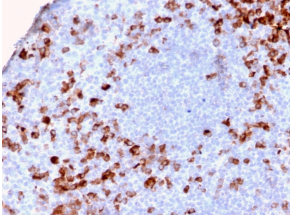
## Anti-Kappa Light Chain Antibody [KLC2886R] - BSA and Azide free (A252166)

### Specifications:

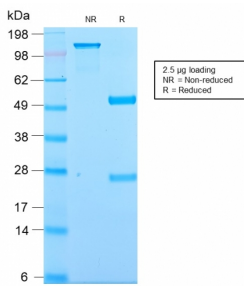
Name:	Anti-Kappa Light Chain Antibody [KLC2886R] - BSA and Azide free
Description:	Recombinant rabbit monoclonal [KLC2886R] antibody to Kappa Light Chain.
Specificity:	This antibody is specific to kappa light chain of immunoglobulin and shows no cross-reaction with lambda light chain or any of the five heavy chains. It recognizes human Ig kappa light chains of both secreted and cell surface immunoglobulin. It detects also free kappa light chains. In mammals, the two light chains in an antibody are always identical, with only one type of light chain, kappa or lambda. The ratio of Kappa to Lambda is 70:30. However, with the occurrence of multiple myeloma or other B-cell malignancies this ratio is disturbed. Antibody to the kappa light chain is reportedly useful in the identification of leukemias, plasmacytomas, and certain non-Hodgkins lymphomas. Demonstration of clonality in lymphoid infiltrates indicates that the infiltrate is malignant.
Applications:	IHC-P
Recommended Dilutions:	IHC-P: 1-2 µg/ml
Reactivity:	Human
Immunogen:	Recombinant full-length human Ig kappa chain.
Host:	Rabbit
Clonality:	Monoclonal
Clone ID:	KLC2886R
Isotype:	IgG
Conjugate:	Unconjugated
Purification:	Protein A/G chromatography.
Concentration:	1 mg/ml
Product Form:	Liquid
Formulation:	Supplied in 10mM Phosphate Buffered Saline; without Sodium Azide and carrier free.
Storage:	Shipped at 4°C. Upon delivery aliquot and store at -20°C. Avoid freeze / thaw cycles.
General Notes:	This monoclonal antibody is also available in a different formulation with BSA and Sodium Azide - Anti-Kappa Light Chain Antibody [KLC2886R] (A248986).
Disclaimer:	This product is for research use only. It is not intended for diagnostic or therapeutic use.

## Anti-Kappa Light Chain Antibody [KLC2886R] - BSA and Azide free (A252166)

### Images:



Immunohistochemical analysis of formalin-fixed, paraffin-embedded human tonsil using Anti-Kappa Light Chain Antibody [KLC2886R].



SDS-PAGE analysis of Anti-Kappa Light Chain Antibody [KLC2886R] under non-reduced and reduced conditions; showing intact IgG and intact heavy and light chains, respectively. SDS-PAGE analysis confirms the integrity and purity of the antibody.