

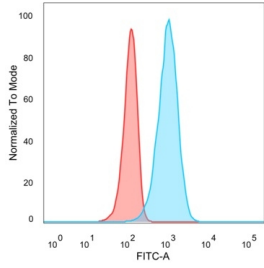
Anti-IRF3 Antibody [PCRP-IRF3-6C8] - BSA and Azide free (A252230)

Specifications:

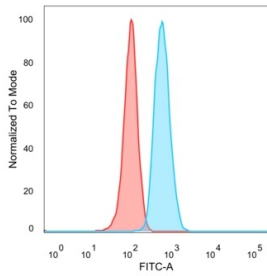
Name:	Anti-IRF3 Antibody [PCRP-IRF3-6C8] - BSA and Azide free
Description:	Mouse monoclonal [PCRP-IRF3-6C8] antibody to IRF3.
Applications:	Flow Cytometry, IF, WB
Recommended Dilutions:	Flow Cytometry: 1-2 µg/million cells, IF: 1-2 µg/ml, WB: 1-2 µg/ml
Reactivity:	Human
Immunogen:	Recombinant full-length human IRF3 protein.
Host:	Mouse
Clonality:	Monoclonal
Clone ID:	PCRP-IRF3-6C8
Isotype:	IgG2b
Light Chains:	kappa
Conjugate:	Unconjugated
Purification:	Protein A/G chromatography.
Concentration:	1 mg/ml
Product Form:	Liquid
Formulation:	Supplied in 10mM Phosphate Buffered Saline; without Sodium Azide and carrier free.
Storage:	Shipped at 4°C. Upon delivery aliquot and store at -20°C. Avoid freeze / thaw cycles.
General Notes:	This monoclonal antibody is also available in a different formulation with BSA and Sodium Azide - Anti-IRF3 Antibody [PCRP-IRF3-6C8] (A249050).
Disclaimer:	This product is for research use only. It is not intended for diagnostic or therapeutic use.

Anti-IRF3 Antibody [PCRP-IRF3-6C8] - BSA and Azide free (A252230)

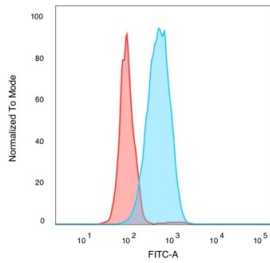
Images:



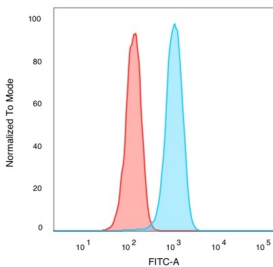
Flow cytometric analysis of PFA fixed U87 cells using Anti-IRF3 Antibody [PCRP-IRF3-6C8] followed by Goat Anti-Mouse IgG (CF® 488) (Blue). Unstained cells (red).



Flow cytometric analysis of PFA fixed Raji cells using Anti-IRF3 Antibody [PCRP-IRF3-6C8] followed by Goat Anti-Mouse IgG (CF® 488) (Blue). Unstained cells (red).



Flow cytometric analysis of PFA fixed MCF-7 cells using Anti-IRF3 Antibody [PCRP-IRF3-6C8] followed by Goat Anti-Mouse IgG (CF® 488) (Blue). Unstained cells (red).



Flow cytometric analysis of PFA fixed K562 cells using Anti-IRF3 Antibody [PCRP-IRF3-6C8] followed by Goat Anti-Mouse IgG (CF® 488) (Blue). Unstained cells (red).