

Anti-Androgen Receptor Antibody [SPM335] - BSA and Azide free (A252234)

Specifications:

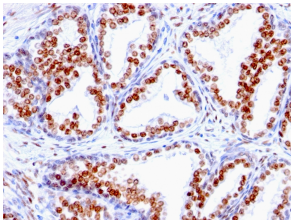
Name:	Anti-Androgen Receptor Antibody [SPM335] - BSA and Azide free
Description:	Mouse monoclonal [SPM335] antibody to Androgen Receptor.
Specificity:	This antibody recognizes a protein of 110kDa, which is identified as androgen receptor (AR). It reacts with full length, and the newly described A form of the receptor. It does not cross react with estrogen, progesterone, or glucocorticoid receptors. The expression of AR is reportedly inversely correlated with histologic grade i.e. well differentiated prostate tumors show higher expression than the poorly differentiated tumors. In prostate cancer, AR has been proposed, as a marker of hormone-responsiveness and thus it may be useful in identifying patients likely to benefit from anti-androgen therapy. Anti-androgen receptor has been useful clinically in differentiating morpheaform basal cell carcinoma (mBCC) from desmoplastic trichoepithelioma (DTE) in the skin. This MAb is superb for staining of formalin/paraffin tissues.
Applications:	Flow Cytometry, IF, IHC-P
Recommended Dilutions:	Flow Cytometry: 1-2 µg/million cells, IF: 1-2 µg/ml, IHC-P: 1-2 µg/ml
Reactivity:	Human
Cross Reactivity:	This antibody does not cross react with Mouse.
Immunogen:	Synthetic peptide corresponding to amino acids 302-318 of human Androgen Receptor.
Sequence:	STEDTAEYSPFKGGYTK
Host:	Mouse
Clonality:	Monoclonal
Clone ID:	SPM335
Isotype:	IgG1
Light Chains:	kappa
Conjugate:	Unconjugated
Purification:	Protein A/G chromatography.
Concentration:	1 mg/ml
Product Form:	Liquid
Formulation:	Supplied in 10mM Phosphate Buffered Saline; without Sodium Azide and carrier free.

Anti-Androgen Receptor Antibody [SPM335] - BSA and Azide free (A252234)

Specifications continued:

Storage:	Shipped at 4°C. Upon delivery aliquot and store at -20°C. Avoid freeze / thaw cycles.
General Notes:	This monoclonal antibody is also available in a different formulation with BSA and Sodium Azide - Anti-Androgen Receptor Antibody [SPM335] (A249054).
Disclaimer:	This product is for research use only. It is not intended for diagnostic or therapeutic use.

Images:



Immunohistochemical analysis of formalin-fixed, paraffin-embedded human prostate carcinoma using Anti-Androgen Receptor Antibody [SPM335].