

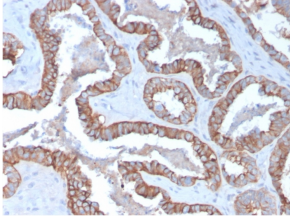
Anti-Cytokeratin 15 Antibody [KRT15/2957] - BSA and Azide free (A252360)

Specifications:

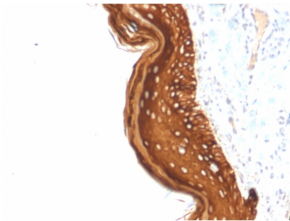
| | |
|------------------------|--|
| Name: | Anti-Cytokeratin 15 Antibody [KRT15/2957] - BSA and Azide free |
| Description: | Mouse monoclonal [KRT15/2957] antibody to Cytokeratin 15. |
| Applications: | Flow Cytometry, IF, WB, IHC-P |
| Recommended Dilutions: | Flow Cytometry: 1-2 µg/million cells, IF: 1-2 µg/ml, WB: 1-2 µg/ml, IHC-P: 1-2 µg/ml |
| Reactivity: | Human |
| Immunogen: | Recombinant full-length human KRT15 protein. |
| Host: | Mouse |
| Clonality: | Monoclonal |
| Clone ID: | KRT15/2957 |
| Isotype: | IgG2c |
| Light Chains: | kappa |
| Conjugate: | Unconjugated |
| Purification: | Protein A/G chromatography. |
| Concentration: | 1 mg/ml |
| Product Form: | Liquid |
| Formulation: | Supplied in 10mM Phosphate Buffered Saline; without Sodium Azide and carrier free. |
| Storage: | Shipped at 4°C. Upon delivery aliquot and store at -20°C. Avoid freeze / thaw cycles. |
| General Notes: | This monoclonal antibody is also available in a different formulation with BSA and Sodium Azide - Anti-Cytokeratin 15 Antibody [KRT15/2957] (A249180). |
| Disclaimer: | This product is for research use only. It is not intended for diagnostic or therapeutic use. |

Anti-Cytokeratin 15 Antibody [KRT15/2957] - BSA and Azide free (A252360)

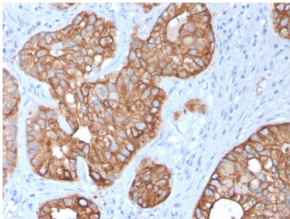
Images:



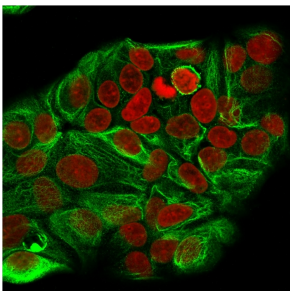
Immunohistochemical analysis of formalin-fixed, paraffin-embedded human prostate carcinoma using Anti-Cytokeratin 15 Antibody [KRT15/2957].



Immunohistochemical analysis of formalin-fixed, paraffin-embedded human basal cell carcinoma using Anti-Cytokeratin 15 Antibody [KRT15/2957].



Immunohistochemical analysis of formalin-fixed, paraffin-embedded human colon carcinoma using Anti-Cytokeratin 15 Antibody [KRT15/2957].



Immunofluorescent analysis of methanol fixed MCF-7 cells stained with Anti-Cytokeratin 15 Antibody [KRT15/2957] followed by Goat Anti-Mouse IgG (CF® 488) (Green). The nuclear counterstain is RedDot (Red).