

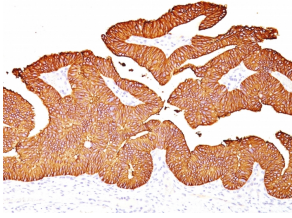
Anti-EpCAM Antibody [EGP40/837] - BSA and Azide free (A252442)

Specifications:

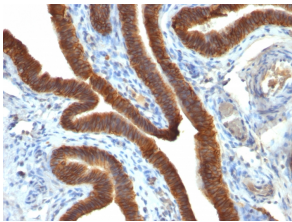
Name:	Anti-EpCAM Antibody [EGP40/837] - BSA and Azide free
Description:	Mouse monoclonal [EGP40/837] antibody to EpCAM.
Applications:	Flow Cytometry, IF, WB, IHC-P
Recommended Dilutions:	Flow Cytometry: 1-2 µg/million cells, IF: 1-2 µg/ml, WB: 1-2 µg/ml, IHC-P: 1-2 µg/ml
Reactivity:	Human
Cross Reactivity:	This antibody does not cross react with Mouse or Rat.
Immunogen:	Recombinant human TACSTD1 protein.
Host:	Mouse
Clonality:	Monoclonal
Clone ID:	EGP40/837
Isotype:	IgG1
Light Chains:	kappa
Conjugate:	Unconjugated
Purification:	Protein A/G chromatography.
Concentration:	1 mg/ml
Product Form:	Liquid
Formulation:	Supplied in 10mM Phosphate Buffered Saline; without Sodium Azide and carrier free.
Storage:	Shipped at 4°C. Upon delivery aliquot and store at -20°C. Avoid freeze / thaw cycles.
General Notes:	This monoclonal antibody is also available in a different formulation with BSA and Sodium Azide - Anti-EpCAM Antibody [EGP40/837] (A249262).
Disclaimer:	This product is for research use only. It is not intended for diagnostic or therapeutic use.

Anti-EpCAM Antibody [EGP40/837] - BSA and Azide free (A252442)

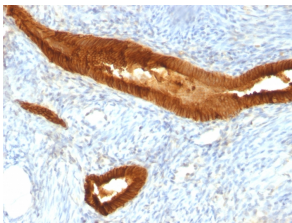
Images:



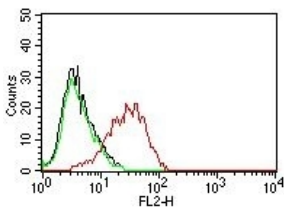
Immunohistochemical analysis of formalin-fixed, paraffin-embedded human colon carcinoma using Anti-EpCAM Antibody [EGP40/837].



Immunohistochemical analysis of formalin-fixed, paraffin-embedded human ovarian carcinoma using Anti-EpCAM Antibody [EGP40/837].



Immunohistochemical analysis of formalin-fixed, paraffin-embedded human endometrial cancer using Anti-EpCAM Antibody [EGP40/837].



Flow cytometric analysis of MCF-7 cells labeling EpCam with Anti-EpCAM Antibody [EGP40/837] (PE) (Red). Cells alone (Black). Isotype Control (Green).