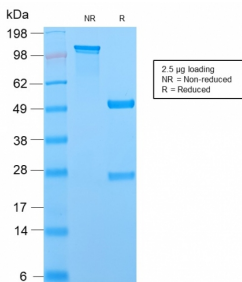


# Anti-MCM7 Antibody [MCM7/2756R] - BSA and Azide free (A252486)

## Specifications:

|                        |  |
|------------------------|--|
| Name:                  | Anti-MCM7 Antibody [MCM7/2756R] - BSA and Azide free   |
| Description:           | Recombinant rabbit monoclonal [MCM7/2756R] antibody to MCM7.   |
| Applications:          | WB, IHC-P  |
| Recommended Dilutions: | WB: 1-2 µg/ml, IHC-P: 1-2 µg/ml  |
| Reactivity:            | Human  |
| Immunogen:             | Recombinant fragment, around amino acids 195-319, of human MCM7 protein.   |
| Host:                  | Rabbit   |
| Clonality:             | Monoclonal   |
| Clone ID:              | MCM7/2756R   |
| Isotype:               | IgG  |
| Conjugate:             | Unconjugated   |
| Purification:          | Protein A/G chromatography.  |
| Concentration:         | 1 mg/ml  |
| Product Form:          | Liquid   |
| Formulation:           | Supplied in 10mM Phosphate Buffered Saline; without Sodium Azide and carrier free.   |
| Storage:               | Shipped at 4°C. Upon delivery aliquot and store at -20°C. Avoid freeze / thaw cycles.  |
| General Notes:         | This monoclonal antibody is also available in a different formulation with BSA and Sodium Azide - Anti-MCM7 Antibody [MCM7/2756R] (A249306). |
| Disclaimer:            | This product is for research use only. It is not intended for diagnostic or therapeutic use.   |

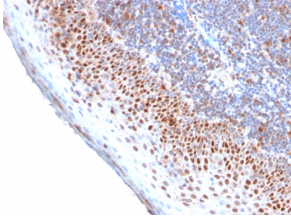
## Images:



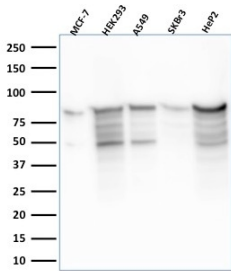
SDS-PAGE analysis of Anti-MCM7 Antibody [MCM7/2756R] under non-reduced and reduced conditions; showing intact IgG and intact heavy and light chains, respectively. SDS-PAGE analysis confirms the integrity and purity of the antibody.

## Anti-MCM7 Antibody [MCM7/2756R] - BSA and Azide free (A252486)

Images continued:



Immunohistochemical analysis of formalin-fixed, paraffin-embedded human tonsil using Anti-MCM7 Antibody [MCM7/2756R].



Western blot analysis of MCF-7, HEK-293, A549, SK-BR-3, and HeP2 cell lysates using Anti-MCM7 Antibody [MCM7/2756R].