

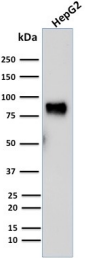
Anti-MDM2 Antibody [SMP14] - BSA and Azide free (A252492)

Specifications:

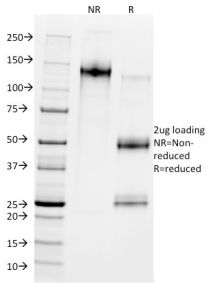
Name:	Anti-MDM2 Antibody [SMP14] - BSA and Azide free
Description:	Mouse monoclonal [SMP14] antibody to MDM2.
Applications:	ELISA, WB, IHC-P
Recommended Dilutions:	WB: 1-2 µg/ml, IHC-P: 1-2 µg/ml
Reactivity:	Human, Mouse, Rat
Immunogen:	Synthetic peptide corresponding to amino acids 154-167 of human MDM2 protein.
Host:	Mouse
Clonality:	Monoclonal
Clone ID:	SMP14
Isotype:	IgG1
Light Chains:	kappa
Conjugate:	Unconjugated
Purification:	Protein A/G chromatography.
Concentration:	1 mg/ml
Product Form:	Liquid
Formulation:	Supplied in 10mM Phosphate Buffered Saline; without Sodium Azide and carrier free.
Storage:	Shipped at 4°C. Upon delivery aliquot and store at -20°C. Avoid freeze / thaw cycles.
General Notes:	This monoclonal antibody is also available in a different formulation with BSA and Sodium Azide - Anti-MDM2 Antibody [SMP14] (A249312).
Disclaimer:	This product is for research use only. It is not intended for diagnostic or therapeutic use.

Anti-MDM2 Antibody [SMP14] - BSA and Azide free (A252492)

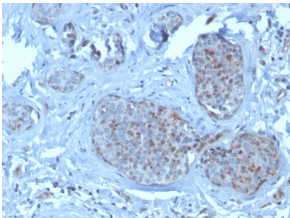
Images:



Western blot analysis of human HepG2 cell lysate using Anti-MDM2 Antibody [SMP14].



SDS-PAGE analysis of Anti-MDM2 Antibody [SMP14] under non-reduced and reduced conditions; showing intact IgG and intact heavy and light chains, respectively. SDS-PAGE analysis confirms the integrity and purity of the antibody.



Immunohistochemical analysis of formalin-fixed, paraffin-embedded human breast carcinoma using Anti-MDM2 Antibody [SMP14].