

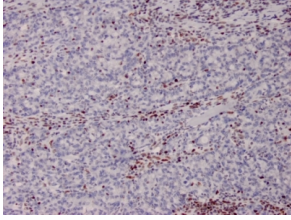
Anti-MSH2 Antibody [MSH2/2622] - BSA and Azide free (A252561)

Specifications:

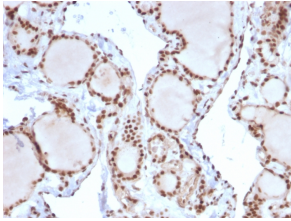
Name:	Anti-MSH2 Antibody [MSH2/2622] - BSA and Azide free
Description:	Mouse monoclonal [MSH2/2622] antibody to MSH2.
Applications:	Flow Cytometry, IF, WB, IHC-P
Recommended Dilutions:	Flow Cytometry: 1-2 µg/million cells, IF: 1-2 µg/ml, WB: 1-2 µg/ml, IHC-P: 1-2 µg/ml
Reactivity:	Human
Immunogen:	Recombinant fragment, around amino acids 327-427, of human MSH2 protein. The exact sequence is proprietary.
Host:	Mouse
Clonality:	Monoclonal
Clone ID:	MSH2/2622
Isotype:	IgG1
Light Chains:	kappa
Conjugate:	Unconjugated
Purification:	Protein A/G chromatography.
Concentration:	1 mg/ml
Product Form:	Liquid
Formulation:	Supplied in 10mM Phosphate Buffered Saline; without Sodium Azide and carrier free.
Storage:	Shipped at 4°C. Upon delivery aliquot and store at -20°C. Avoid freeze / thaw cycles.
General Notes:	This monoclonal antibody is also available in a different formulation with BSA and Sodium Azide - Anti-MSH2 Antibody [MSH2/2622] (A249381).
Disclaimer:	This product is for research use only. It is not intended for diagnostic or therapeutic use.

Anti-MSH2 Antibody [MSH2/2622] - BSA and Azide free (A252561)

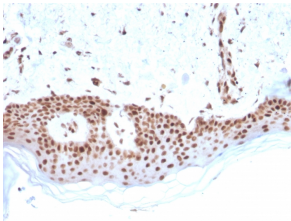
Images:



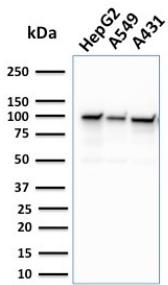
Immunohistochemical analysis of formalin-fixed, paraffin-embedded human colon from a patient with Lynch disease using Anti-MSH2 Antibody [MSH2/2622].



Immunohistochemical analysis of formalin-fixed, paraffin-embedded human thyroid carcinoma using Anti-MSH2 Antibody [MSH2/2622].



Immunohistochemical analysis of formalin-fixed, paraffin-embedded human basal cell carcinoma using Anti-MSH2 Antibody [MSH2/2622].



Western blot analysis of human HepG2, A549, and A431 cell lysates using Anti-MSH2 Antibody [MSH2/2622].