

Anti-Neurofilament Heavy Polypeptide Antibody [NEFL.H/2324R] - BSA and Azide free (A252673)

Specifications:

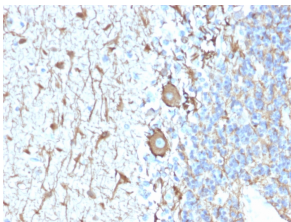
Name:	Anti-Neurofilament Heavy Polypeptide Antibody [NEFL.H/2324R] - BSA and Azide free
Description:	Recombinant rabbit monoclonal [NEFL.H/2324R] antibody to Neurofilament Heavy Polypeptide.
Specificity:	This antibody reacts with a 200kDa protein, identified as heavy sub-unit of neurofilaments (NF-H). Neurofilaments make up the main structural elements of axons and dendrites and are found in neurons, peripheral nerves, and sympathetic ganglion cells. Neurofilaments consist of three major subunits with molecular weights of 68kDa (NF-L), 160kDa (NF-M) and 200kDa (NF-H). Anti-neurofilament stains a number of neural, neuroendocrine, and endocrine tumors. Neuromas, ganglioneuromas, gangliogliomas, ganglioneuroblastomas, and neuroblastomas stain positively for anti-neurofilament. Neurofilaments are also present in paragangliomas as well as adrenal and extra-adrenal pheochromocytomas. Carcinoids, neuroendocrine carcinomas of the skin, and oat cell carcinomas of the lung also express neurofilament.
Applications:	WB, Flow Cytometry, IHC-P
Recommended Dilutions:	WB: 1-2 µg/ml, Flow Cytometry: 1-2 µg/million cells, IHC-P: 1-2 µg/ml
Reactivity:	Human, Mouse, Rat, Porcine, Chicken
Immunogen:	Recombinant full-length human NEFH protein.
Host:	Rabbit
Clonality:	Monoclonal
Clone ID:	NEFL.H/2324R
Isotype:	IgG
Conjugate:	Unconjugated
Purification:	Protein A/G chromatography.
Concentration:	1 mg/ml
Product Form:	Liquid
Formulation:	Supplied in 10mM Phosphate Buffered Saline; without Sodium Azide and carrier free.
Storage:	Shipped at 4°C. Upon delivery aliquot and store at -20°C. Avoid freeze / thaw cycles.
General Notes:	This monoclonal antibody is also available in a different formulation with BSA and Sodium Azide - Anti-Neurofilament Heavy Polypeptide Antibody [NEFL.H/2324R] (A249493).

Anti-Neurofilament Heavy Polypeptide Antibody [NEFL.H/2324R] - BSA and Azide free (A252673)

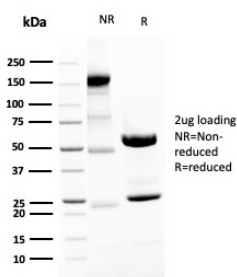
Specifications continued:

Disclaimer: This product is for research use only. It is not intended for diagnostic or therapeutic use.

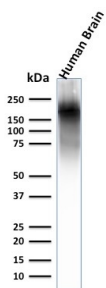
Images:



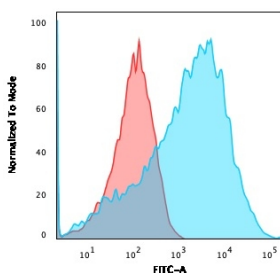
Immunohistochemical analysis of formalin-fixed, paraffin-embedded human cerebellum using Anti-Neurofilament Heavy Polypeptide Antibody [NEFL.H/2324R].



SDS-PAGE analysis of Anti-Neurofilament Heavy Polypeptide Antibody [NEFL.H/2324R] under non-reduced and reduced conditions; showing intact IgG and intact heavy and light chains, respectively. SDS-PAGE analysis confirms the integrity and purity of the antibody.



Western blot analysis of human brain lysate using Anti-Neurofilament Heavy Polypeptide Antibody [NEFL.H/2324R].



Flow cytometric analysis of HEK293 cells using Anti-Neurofilament Heavy Polypeptide Antibody [NEFL.H/2324R] followed by Goat Anti-Mouse IgG (CF® 488) (Blue). Isotype Control (Red).