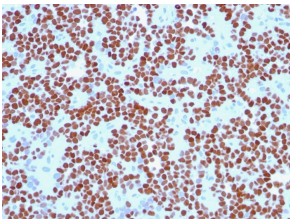


## Anti-NKX2.2 Antibody [NX2/294] - BSA and Azide free (A252686)

### Specifications:

Name:	Anti-NKX2.2 Antibody [NX2/294] - BSA and Azide free
Description:	Mouse monoclonal [NX2/294] antibody to NKX2.2.
Applications:	Flow Cytometry, IF, IHC-P
Recommended Dilutions:	Flow Cytometry: 1-2 µg/million cells, IF: 1-2 µg/ml, IHC-P: 1-2 µg/ml
Reactivity:	Human, Mouse, Rat, Chicken
Immunogen:	Recombinant full-length human NKX2.2 protein.
Host:	Mouse
Clonality:	Monoclonal
Clone ID:	NX2/294
Isotype:	IgG2b
Light Chains:	kappa
Conjugate:	Unconjugated
Purification:	Protein A/G chromatography.
Concentration:	1 mg/ml
Product Form:	Liquid
Formulation:	Supplied in 10mM Phosphate Buffered Saline; without Sodium Azide and carrier free.
Storage:	Shipped at 4°C. Upon delivery aliquot and store at -20°C. Avoid freeze / thaw cycles.
General Notes:	This monoclonal antibody is also available in a different formulation with BSA and Sodium Azide - Anti-NKX2.2 Antibody [NX2/294] (A249506).
Disclaimer:	This product is for research use only. It is not intended for diagnostic or therapeutic use.

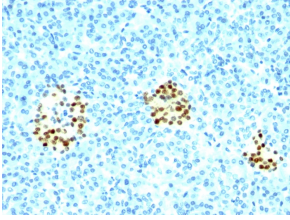
### Images:



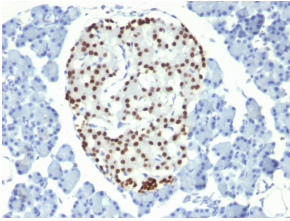
Immunohistochemical analysis of formalin-fixed, paraffin-embedded human Ewing's sarcoma using Anti-NKX2.2 Antibody [NX2/294].

## Anti-NKX2.2 Antibody [NX2/294] - BSA and Azide free (A252686)

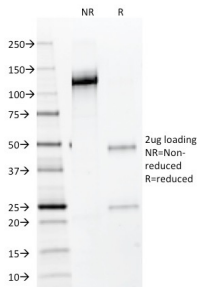
Images continued:



Immunohistochemical analysis of formalin-fixed, paraffin-embedded human pancreas using Anti-NKX2.2 Antibody [NX2/294].



Immunohistochemical analysis of formalin-fixed, paraffin-embedded rat pancreas using Anti-NKX2.2 Antibody [NX2/294].



SDS-PAGE analysis of Anti-NKX2.2 Antibody [NX2/294] under non-reduced and reduced conditions; showing intact IgG and intact heavy and light chains, respectively. SDS-PAGE analysis confirms the integrity and purity of the antibody.