

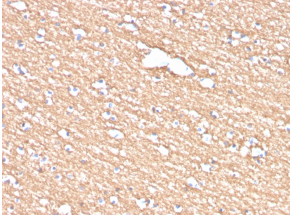
## Anti-Myelin PLP Antibody [PLP1/4259] - BSA and Azide free (A252818)

### Specifications:

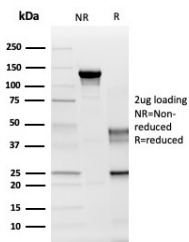
Name:	Anti-Myelin PLP Antibody [PLP1/4259] - BSA and Azide free
Description:	Mouse monoclonal [PLP1/4259] antibody to Myelin PLP.
Applications:	IHC-P
Recommended Dilutions:	IHC-P: 1-2 µg/ml
Reactivity:	Human, Mouse, Rat, Tenerife Lizard, Cow
Immunogen:	Synthetic peptide corresponding to amino acids 272-277 of Myelin Proteolipid protein.
Sequence:	GRGTKF
Host:	Mouse
Clonality:	Monoclonal
Clone ID:	PLP1/4259
Isotype:	IgG2a
Conjugate:	Unconjugated
Purification:	Protein A/G chromatography.
Concentration:	1 mg/ml
Product Form:	Liquid
Formulation:	Supplied in 10mM Phosphate Buffered Saline; without Sodium Azide and carrier free.
Storage:	Shipped at 4°C. Upon delivery aliquot and store at -20°C. Avoid freeze / thaw cycles.
General Notes:	This monoclonal antibody is also available in a different formulation with BSA and Sodium Azide - Anti-Myelin PLP Antibody [PLP1/4259] (A249638).
Disclaimer:	This product is for research use only. It is not intended for diagnostic or therapeutic use.

## Anti-Myelin PLP Antibody [PLP1/4259] - BSA and Azide free (A252818)

### Images:



Immunohistochemical analysis of formalin-fixed, paraffin-embedded human brain using Anti-Myelin PLP Antibody [PLP1/4259].



SDS-PAGE analysis of Anti-Myelin PLP Antibody [PLP1/4259] under non-reduced and reduced conditions; showing intact IgG and intact heavy and light chains, respectively. SDS-PAGE analysis confirms the integrity and purity of the antibody.