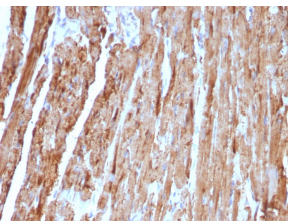


Anti-Cytochrome C Antibody [CYCS/1010] - BSA and Azide free (A252826)

Specifications:

Name:	Anti-Cytochrome C Antibody [CYCS/1010] - BSA and Azide free
Description:	Mouse monoclonal [CYCS/1010] antibody to Cytochrome C.
Applications:	WB, IHC-P
Recommended Dilutions:	WB: 1-2 µg/ml, IHC-P: 0.25-0.5 µg/ml
Reactivity:	Human, Rat
Immunogen:	Recombinant full-length human CYCS protein.
Host:	Mouse
Clonality:	Monoclonal
Clone ID:	CYCS/1010
Isotype:	IgG2b
Light Chains:	kappa
Conjugate:	Unconjugated
Purification:	Protein A/G chromatography.
Concentration:	1 mg/ml
Product Form:	Liquid
Formulation:	Supplied in 10mM Phosphate Buffered Saline; without Sodium Azide and carrier free.
Storage:	Shipped at 4°C. Upon delivery aliquot and store at -20°C. Avoid freeze / thaw cycles.
General Notes:	This monoclonal antibody is also available in a different formulation with BSA and Sodium Azide - Anti-Cytochrome C Antibody [CYCS/1010] (A249646).
Disclaimer:	This product is for research use only. It is not intended for diagnostic or therapeutic use.

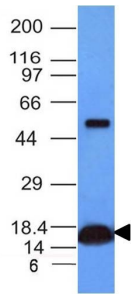
Images:



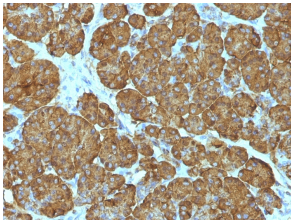
Immunohistochemical analysis of formalin-fixed, paraffin-embedded human heart using Anti-Cytochrome C Antibody [CYCS/1010].

Anti-Cytochrome C Antibody [CYCS/1010] - BSA and Azide free (A252826)

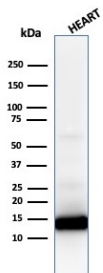
Images continued:



Western blot analysis of human heart tissue lysate using Anti-Cytochrome C Antibody [CYCS/1010].



Immunohistochemical analysis of formalin-fixed, paraffin-embedded human pancreas using Anti-Cytochrome C Antibody [CYCS/1010].



Western blot analysis of human heart tissue lysate using Anti-Cytochrome C Antibody [CYCS/1010].