

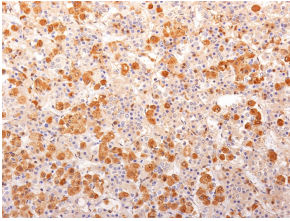
Anti-ACTH Antibody [57] - BSA and Azide free (A252839)

Specifications:

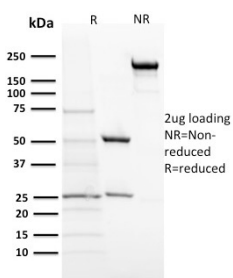
Name:	Anti-ACTH Antibody [57] - BSA and Azide free
Description:	Mouse monoclonal [57] antibody to ACTH.
Specificity:	This antibody is specific to Synacthen, amino acids 1-24 of ACTH, and it does not react with CLIP, amino acids 25-39 of ACTH.
Applications:	ELISA, Flow Cytometry, IF, IHC-P
Recommended Dilutions:	Flow Cytometry: 1-2 µg/million cells, IF: 1-2 µg/ml, IHC-P: 1-2 µg/ml
Reactivity:	Human, Mouse, Rat
Immunogen:	Recombinant fragment corresponding to the N terminal of human ACTH protein, conjugated to keyhole limpet haemocyanin.
Host:	Mouse
Clonality:	Monoclonal
Clone ID:	57
Isotype:	IgG1
Light Chains:	kappa
Conjugate:	Unconjugated
Purification:	Protein A/G chromatography.
Concentration:	1 mg/ml
Product Form:	Liquid
Formulation:	Supplied in 10mM Phosphate Buffered Saline; without Sodium Azide and carrier free.
Storage:	Shipped at 4°C. Upon delivery aliquot and store at -20°C. Avoid freeze / thaw cycles.
General Notes:	This monoclonal antibody is also available in a different formulation with BSA and Sodium Azide - Anti-ACTH Antibody [57] (A249659).
Disclaimer:	This product is for research use only. It is not intended for diagnostic or therapeutic use.

Anti-ACTH Antibody [57] - BSA and Azide free (A252839)

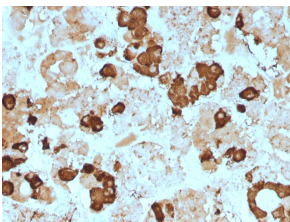
Images:



Immunohistochemical analysis of formalin-fixed, paraffin-embedded human pituitary gland using Anti-ACTH Antibody [57].



SDS-PAGE analysis of Anti-ACTH Antibody [57] under non-reduced and reduced conditions; showing intact IgG and intact heavy and light chains, respectively. SDS-PAGE analysis confirms the integrity and purity of the antibody.



Immunohistochemical analysis of formalin-fixed, paraffin-embedded human pituitary gland using Anti-ACTH Antibody [57].