

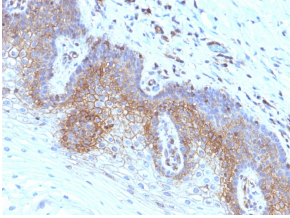
## Anti-beta 2 Microglobulin Antibody [SPM617] - BSA and Azide free (A252929)

### Specifications:

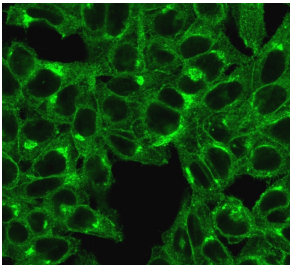
Name:	Anti-beta 2 Microglobulin Antibody [SPM617] - BSA and Azide free
Description:	Mouse monoclonal [SPM617] antibody to beta 2 Microglobulin.
Applications:	WB, Flow Cytometry, IF, IHC-P
Recommended Dilutions:	WB: 1-2 µg/ml, Flow Cytometry: 1-2 µg/million cells, IF: 1-2 µg/ml, IHC-P: 1-2 µg/ml
Reactivity:	Human, Non-Human Primates
Immunogen:	Recombinant full-length human B2M protein.
Host:	Mouse
Clonality:	Monoclonal
Clone ID:	SPM617
Isotype:	IgG1
Light Chains:	kappa
Conjugate:	Unconjugated
Purification:	Protein A/G chromatography.
Concentration:	1 mg/ml
Product Form:	Liquid
Formulation:	Supplied in 10mM Phosphate Buffered Saline; without Sodium Azide and carrier free.
Storage:	Shipped at 4°C. Upon delivery aliquot and store at -20°C. Avoid freeze / thaw cycles.
General Notes:	This monoclonal antibody is also available in a different formulation with BSA and Sodium Azide - Anti-beta 2 Microglobulin Antibody [SPM617] (A249749).
Disclaimer:	This product is for research use only. It is not intended for diagnostic or therapeutic use.

# Anti-beta 2 Microglobulin Antibody [SPM617] - BSA and Azide free (A252929)

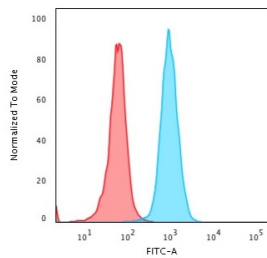
## Images:



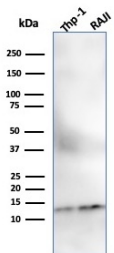
Immunohistochemical analysis of formalin-fixed, paraffin-embedded human cervical carcinoma using Anti-beta 2 Microglobulin Antibody [SPM617].



Immunofluorescent analysis of HeLa cells stained with Anti-beta 2 Microglobulin Antibody [SPM617] followed by Goat Anti-Mouse IgG (CF® 488) (Green).



Flow cytometric analysis of PFA fixed HeLa cells using Anti-beta 2 Microglobulin Antibody [SPM617] followed by Goat Anti-Mouse IgG (CF® 488) (Blue). Isotype Control (Red).



Western blot analysis of THP-1 and Raji Cell lysates using Anti-beta 2 Microglobulin Antibody [SPM617].