

## Anti-beta 2 Microglobulin Antibody [C21.48A1] - BSA and Azide free (A252931)

### Specifications:

Name:	Anti-beta 2 Microglobulin Antibody [C21.48A1] - BSA and Azide free
Description:	Mouse monoclonal [C21.48A1] antibody to beta 2 Microglobulin.
Specificity:	<p>The antibody recognizes the hidden determinant of beta-2 microglobulin (i.e. binding to its determinant is available only when the chain is separated from the HLA heavy chain. Beta-2 microglobulin is a 12KDa protein with a pI of 5.6. Serum beta2 microglobulin levels are a reflection of cell turnover. Levels rise with fever, inflammation, and infection. Increased serum levels are also seen in B-cell malignancies and in renal failure and may indicate a worse prognosis for patients with early-stage Hodgkins lymphoma. In urine, increased levels are seen in proximal renal tubular disease as well as renal transplant rejection. Beta2 microglobulin levels can rise either because its rate of synthesis has increased (e.g. in AIDS, malignant monoclonal plasma cell dyscrasia, solid tumours and autoimmune disease) or because of impaired renal filtration (e.g. due to renal insufficiency, graft rejection or nephrotoxicity induced by post-transplantation immunosuppressive therapy).</p>
Applications:	Flow Cytometry, WB, IF
Recommended Dilutions:	Flow Cytometry: 1-2 µg/million cells, WB: 1-2 µg/ml, IF: 1-2 µg/ml
Reactivity:	Human, Non-Human Primates
Immunogen:	Soluble beta 2 microglobulin.
Host:	Mouse
Clonality:	Monoclonal
Clone ID:	C21.48A1
Isotype:	IgG2b
Light Chains:	kappa
Conjugate:	Unconjugated
Purification:	Protein A/G chromatography.
Concentration:	1 mg/ml
Product Form:	Liquid
Formulation:	Supplied in 10mM Phosphate Buffered Saline; without Sodium Azide and carrier free.
Storage:	Shipped at 4°C. Upon delivery aliquot and store at -20°C. Avoid freeze / thaw cycles.

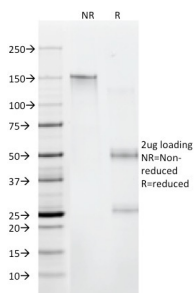
# Anti-beta 2 Microglobulin Antibody [C21.48A1] - BSA and Azide free (A252931)

## Specifications continued:

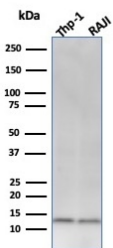
**General Notes:** This monoclonal antibody is also available in a different formulation with BSA and Sodium Azide - Anti-beta 2 Microglobulin Antibody [C21.48A1] (A249751).

**Disclaimer:** This product is for research use only. It is not intended for diagnostic or therapeutic use.

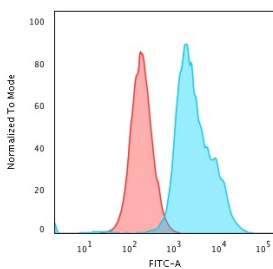
## Images:



SDS-PAGE analysis of Anti-beta 2 Microglobulin Antibody [C21.48A1] under non-reduced and reduced conditions; showing intact IgG and intact heavy and light chains, respectively. SDS-PAGE analysis confirms the integrity and purity of the antibody.



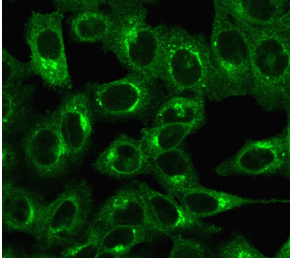
Western blot analysis of THP-1 and Raji Cell lysates using Anti-beta 2 Microglobulin Antibody [C21.48A1].



Flow cytometric analysis of PFA fixed HeLa cells using Anti-beta 2 Microglobulin Antibody [C21.48A1] followed by Goat Anti-Mouse IgG (CF® 488) (Blue). Isotype Control (Red).

## Anti-beta 2 Microglobulin Antibody [C21.48A1] - BSA and Azide free (A252931)

Images continued:



Immunofluorescent analysis of HeLa cells stained with Anti-beta 2 Microglobulin Antibody [C21.48A1] followed by Goat Anti-Mouse IgG (CF® 488) (Green).