

## Anti-Bcl-2 Antibody [rBCL2/796] - BSA and Azide free (A253053)

### Specifications:

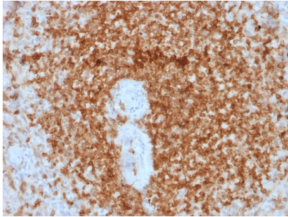
Name:	Anti-Bcl-2 Antibody [rBCL2/796] - BSA and Azide free
Description:	Recombinant mouse monoclonal [rBCL2/796] antibody to Bcl-2.
Specificity:	This antibody recognizes a protein of 25-26kDa, identified as the bcl-2lpha oncoprotein. It shows no cross-reaction with Bcl-x or Bax protein. Expression of bcl-2lpha oncoprotein inhibits the programmed cell death (apoptosis). In most follicular lymphomas, neoplastic germinal centers express high levels of bcl-2lpha protein, whereas the normal or hyperplastic germinal centers are negative. Consequently, this antibody is valuable when distinguishing between reactive and neoplastic follicular proliferation in lymph node biopsies. It may also be used in distinguishing between those follicular lymphomas that express bcl-2 protein and the small number in which the neoplastic cells are bcl-2 negative.
Applications:	Flow Cytometry, IF, WB, IHC-P
Recommended Dilutions:	Flow Cytometry: 1-2 µg/million cells, IF: 1-2 µg/ml, WB: 1-2 µg/ml, IHC-P: 1-2 µg/ml
Reactivity:	Human
Immunogen:	Recombinant full-length human BCL2 protein.
Host:	Mouse
Clonality:	Monoclonal
Clone ID:	rBCL2/796
Isotype:	IgG1
Light Chains:	kappa
Conjugate:	Unconjugated
Purification:	Protein A/G chromatography.
Concentration:	1 mg/ml
Product Form:	Liquid
Formulation:	Supplied in 10mM Phosphate Buffered Saline; without Sodium Azide and carrier free.
Storage:	Shipped at 4°C. Upon delivery aliquot and store at -20°C. Avoid freeze / thaw cycles.
General Notes:	This monoclonal antibody is also available in a different formulation with BSA and Sodium Azide - Anti-Bcl-2 Antibody [rBCL2/796] (A249873).

# Anti-Bcl-2 Antibody [rBCL2/796] - BSA and Azide free (A253053)

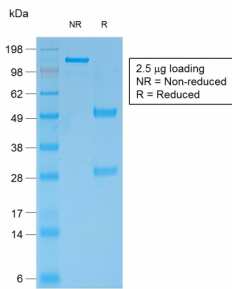
## Specifications continued:

**Disclaimer:** This product is for research use only. It is not intended for diagnostic or therapeutic use.

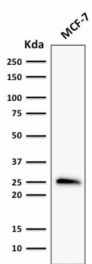
## Images:



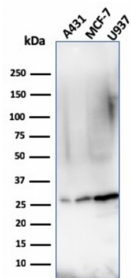
Immunohistochemical analysis of formalin-fixed, paraffin-embedded human spleen using Anti-Bcl-2 Antibody [rBCL2/796].



SDS-PAGE analysis of Anti-Bcl-2 Antibody [rBCL2/796] under non-reduced and reduced conditions; showing intact IgG and intact heavy and light chains, respectively. SDS-PAGE analysis confirms the integrity and purity of the antibody.



Western blot analysis of MCF-7 cell lysate using Anti-Bcl-2 Antibody [rBCL2/796].



Western blot analysis of A431, MCF-7, and U937 cell lysates using Anti-Bcl-2 Antibody [rBCL2/796].