

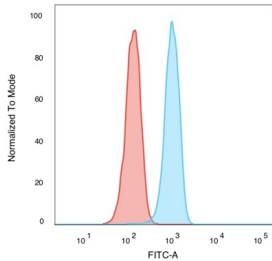
Anti-NF-kB p65 Antibody [PCRP-RELA-1E3] - BSA and Azide free (A253057)

Specifications:

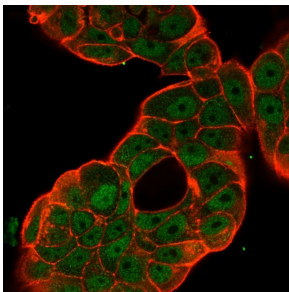
Name:	Anti-NF-kB p65 Antibody [PCRP-RELA-1E3] - BSA and Azide free
Description:	Mouse monoclonal [PCRP-RELA-1E3] antibody to NF-kB p65.
Applications:	Flow Cytometry, IF
Recommended Dilutions:	Flow Cytometry: 1-2 µg/million cells, IF: 1-2 µg/ml
Reactivity:	Human
Cross Reactivity:	This antibody is predicted to cross react with Rat.
Immunogen:	Recombinant full-length human RELA protein.
Host:	Mouse
Clonality:	Monoclonal
Clone ID:	PCRP-RELA-1E3
Isotype:	IgG2b
Conjugate:	Unconjugated
Purification:	Protein A/G chromatography.
Concentration:	1 mg/ml
Product Form:	Liquid
Formulation:	Supplied in 10mM Phosphate Buffered Saline; without Sodium Azide and carrier free.
Storage:	Shipped at 4°C. Upon delivery aliquot and store at -20°C. Avoid freeze / thaw cycles.
General Notes:	This monoclonal antibody is also available in a different formulation with BSA and Sodium Azide - Anti-NF-kB p65 Antibody [PCRP-RELA-1E3] (A249877).
Disclaimer:	This product is for research use only. It is not intended for diagnostic or therapeutic use.

Anti-NF-kB p65 Antibody [PCRP-RELA-1E3] - BSA and Azide free (A253057)

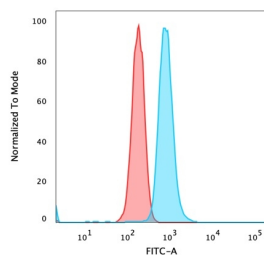
Images:



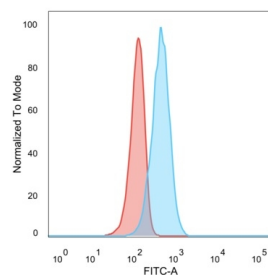
Flow cytometric analysis of PFA fixed K562 cells using Anti-NF-kB p65 Antibody [PCRP-RELA-1E3] followed by Goat Anti-Mouse IgG (CF® 488) (Blue). Isotype Control (Red).



Immunofluorescent analysis of PFA fixed MCF-7 cells stained with Anti-NF-kB p65 Antibody [PCRP-RELA-1E3] followed by Goat Anti-Mouse IgG (CF® 488) (Green). Counterstain is Phalloidin-CF® 640A (Red).



Flow cytometric analysis of PFA fixed HeLa cells using Anti-NF-kB p65 Antibody [PCRP-RELA-1E3] followed by Goat Anti-Mouse IgG (CF® 488) (Blue). Isotype Control (Red).



Flow cytometric analysis of PFA fixed U87 cells using Anti-NF-kB p65 Antibody [PCRP-RELA-1E3] followed by Goat Anti-Mouse IgG (CF® 488) (Blue). Isotype Control (Red).