

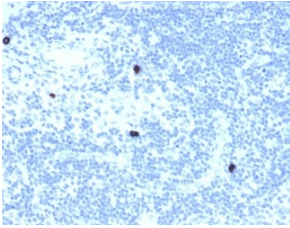
## Anti-RXR $\beta$ Antibody [PCRP-RXR $\beta$ -2B6] - BSA and Azide free (A253096)

### Specifications:

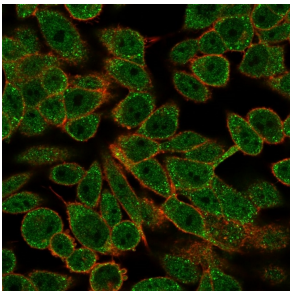
Name:	Anti-RXR $\beta$ Antibody [PCRP-RXR $\beta$ -2B6] - BSA and Azide free
Description:	Mouse monoclonal [PCRP-RXR $\beta$ -2B6] antibody to RXR $\beta$ .
Specificity:	Two families of retinoid receptors, RARs and RXRs, have been identified. Retinoic acid receptors (RARs) include RAR, are activated by 9-cis-RA, a stereo- and photo-isomer of all trans-RA that is expressed in vivo in both liver and kidney and may represent a widely used hormone. As is true for the RAR subfamily, the RXR receptors are closely related to each other both in their DNA-binding and ligand-binding domains and are encoded by separate genes at distinct chromosomal loci.
Applications:	Flow Cytometry, IF, WB, IHC-P
Recommended Dilutions:	Flow Cytometry: 1-2 $\mu$ g/million cells, IF: 1-2 $\mu$ g/ml, WB: 1-2 $\mu$ g/ml, IHC-P: 1-2 $\mu$ g/ml
Reactivity:	Human
Immunogen:	Recombinant full-length human RXR $\beta$ protein.
Host:	Mouse
Clonality:	Monoclonal
Clone ID:	PCRP-RXR $\beta$ -2B6
Isotype:	IgG2a
Conjugate:	Unconjugated
Purification:	Protein A/G chromatography.
Concentration:	1 mg/ml
Product Form:	Liquid
Formulation:	Supplied in 10mM Phosphate Buffered Saline; without Sodium Azide and carrier free.
Storage:	Shipped at 4°C. Upon delivery aliquot and store at -20°C. Avoid freeze / thaw cycles.
General Notes:	This monoclonal antibody is also available in a different formulation with BSA and Sodium Azide - Anti-RXR $\beta$ Antibody [PCRP-RXR $\beta$ -2B6] (A249916).
Disclaimer:	This product is for research use only. It is not intended for diagnostic or therapeutic use.

## Anti-RXR $\beta$ Antibody [PCRP-RXR $\beta$ -2B6] - BSA and Azide free (A253096)

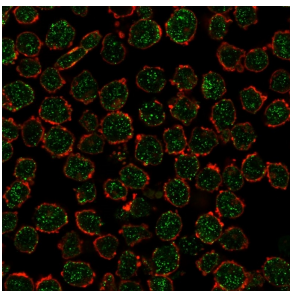
### Images:



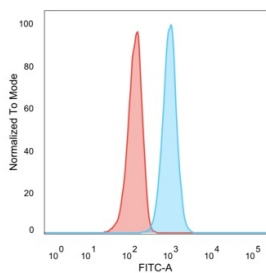
Immunohistochemical analysis of formalin-fixed, paraffin-embedded human lymph node using Anti-RXR $\beta$  Antibody [PCRP-RXR $\beta$ -2B6].



Immunofluorescent analysis of PFA fixed HeLa cells stained with Anti-RXR $\beta$  Antibody [PCRP-RXR $\beta$ -2B6] followed by Goat Anti-Mouse IgG (CF® 488) (Green). Counterstain is Phalloidin-CF® 640A (Red).



Immunofluorescent analysis of PFA fixed K562 cells stained with Anti-RXR $\beta$  Antibody [PCRP-RXR $\beta$ -2B6] followed by Goat Anti-Mouse IgG (CF® 488) (Green). Counterstain is Phalloidin-CF® 640A (Red).



Flow cytometric analysis of PFA fixed U87 cells using Anti-RXR $\beta$  Antibody [PCRP-RXR $\beta$ -2B6] followed by Goat Anti-Mouse IgG (CF® 488) (Blue). Unstained cells (red).