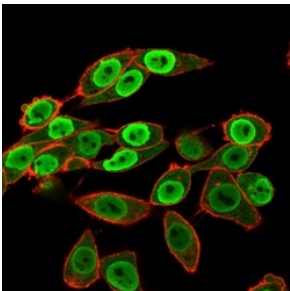


## Anti-SET Antibody [PCRP-SET-1C6] - BSA and Azide free (A253140)

### Specifications:

Name:	Anti-SET Antibody [PCRP-SET-1C6] - BSA and Azide free
Description:	Mouse monoclonal [PCRP-SET-1C6] antibody to SET.
Applications:	Flow Cytometry, IF, WB
Recommended Dilutions:	Flow Cytometry: 1-2 µg/million cells, IF: 1-2 µg/ml, WB: 1-2 µg/ml
Reactivity:	Human
Immunogen:	Recombinant full-length human SET protein.
Host:	Mouse
Clonality:	Monoclonal
Clone ID:	PCRP-SET-1C6
Isotype:	IgG1
Conjugate:	Unconjugated
Purification:	Protein A/G chromatography.
Concentration:	1 mg/ml
Product Form:	Liquid
Formulation:	Supplied in 10mM Phosphate Buffered Saline; without Sodium Azide and carrier free.
Storage:	Shipped at 4°C. Upon delivery aliquot and store at -20°C. Avoid freeze / thaw cycles.
General Notes:	This monoclonal antibody is also available in a different formulation with BSA and Sodium Azide - Anti-SET Antibody [PCRP-SET-1C6] (A249960).
Disclaimer:	This product is for research use only. It is not intended for diagnostic or therapeutic use.

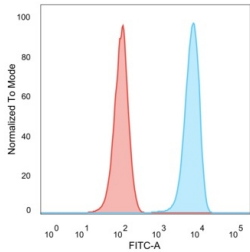
### Images:



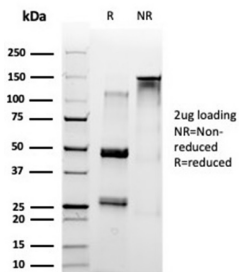
Immunofluorescent analysis of HeLa cells stained with Anti-SET Antibody [PCRP-SET-1C6] followed by Goat Anti-Mouse IgG (CF® 488) (Green). Counterstain is Phalloidin-CF® 640A (Red).

# Anti-SET Antibody [PCRP-SET-1C6] - BSA and Azide free (A253140)

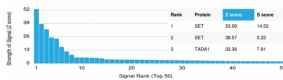
Images continued:



Flow cytometric analysis of PFA fixed HeLa cells using Anti-SET Antibody [PCRP-SET-1C6] followed by Goat Anti-Mouse IgG (CF® 488) (Blue). Isotype Control (Red).



SDS-PAGE analysis of Anti-SET Antibody [PCRP-SET-1C6] under non-reduced and reduced conditions; showing intact IgG and intact heavy and light chains, respectively. SDS-PAGE analysis confirms the integrity and purity of the antibody.



Analysis of protein array containing more than 19,000 full-length human proteins using Anti-SET Antibody [PCRP-SET-1C6]. Z-Score and S-Score: The Z-score represents the strength of a signal that a monoclonal antibody (MAb) (in combination with a fluorescently-tagged anti-IgG secondary antibody) produces when binding to a particular protein on the HuProt™ array. Z-scores are described in units of standard deviations (SD's) above the mean value of all signals generated on that array. If targets on HuProt™ are arranged in descending order of the Z-score, the S-score is the difference (also in units of SD's) between the Z-score. S-score therefore represents the relative target specificity of a MAb to its intended target; a MAb is considered to be specific to its intended target, if the MAb has an S-score of at least 2.5. For example, if a MAb binds to protein X with a Z-score of 43 and to protein Y with a Z-score of 14, then the S-score for the binding of that MAb to protein X is equal to 29.