

Anti-beta III Spectrin Antibody [SPTBN2/1582] - BSA and Azide free (A253224)

Specifications:

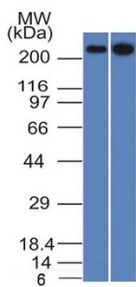
Name:	Anti-beta III Spectrin Antibody [SPTBN2/1582] - BSA and Azide free
Description:	Mouse monoclonal [SPTBN2/1582] antibody to beta III Spectrin .
Specificity:	Spectrin is an actin binding protein that is a major component of the plasma membrane skeleton. Spectrins function as membrane organizers and stabilizers by forming dimers, tetramers and higher polymers. Vertebrate spectrins have two alpha-subunits (alpha-I/alpha-II) four beta-subunits (beta-I-beta-IV) and a beta-H subunit creating diversity and specialization of function. Spectrin III is highly expressed in brain, kidney, pancreas and liver, and at lower levels in lung and placenta. Spectrin beta 3 is primarily expressed in nervous tissues with highest expression levels in the cerebellum, where it is found in Purkinje cell soma and dendrites.
Applications:	ELISA, Flow Cytometry, WB, IHC-P
Recommended Dilutions:	Flow Cytometry: 1-2 µg/million cells, IF: 1-2 µg/ml, WB: 1-2 µg/ml, IHC-P: 1-2 µg/ml
Reactivity:	Human
Immunogen:	Recombinant fragment, around amino acids 356-475, of human SPTBN2 protein. The exact sequence is proprietary.
Host:	Mouse
Clonality:	Monoclonal
Clone ID:	SPTBN2/1582
Isotype:	IgG2a
Light Chains:	kappa
Conjugate:	Unconjugated
Purification:	Protein A/G chromatography.
Concentration:	1 mg/ml
Product Form:	Liquid
Formulation:	Supplied in 10mM Phosphate Buffered Saline; without Sodium Azide and carrier free.
Storage:	Shipped at 4°C. Upon delivery aliquot and store at -20°C. Avoid freeze / thaw cycles.
General Notes:	This monoclonal antibody is also available in a different formulation with BSA and Sodium Azide - Anti-beta III Spectrin Antibody [SPTBN2/1582] (A250044).

Anti-beta III Spectrin Antibody [SPTBN2/1582] - BSA and Azide free (A253224)

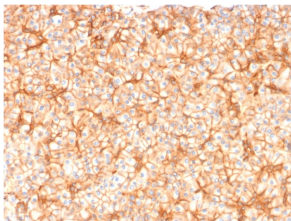
Specifications continued:

Disclaimer: This product is for research use only. It is not intended for diagnostic or therapeutic use.

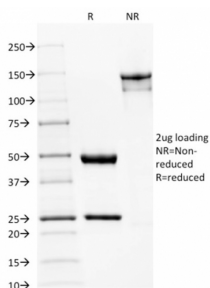
Images:



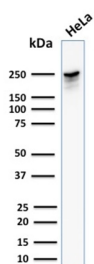
Western blot analysis of HeLa and 293 cell lysates using Anti-beta III Spectrin Antibody [SPTBN2/1582].



Immunohistochemical analysis of formalin-fixed, paraffin-embedded human pancreas using Anti-beta III Spectrin Antibody [SPTBN2/1582].



SDS-PAGE analysis of Anti-beta III Spectrin Antibody [SPTBN2/1582] under non-reduced and reduced conditions; showing intact IgG and intact heavy and light chains, respectively. SDS-PAGE analysis confirms the integrity and purity of the antibody.



Western blot analysis of human HeLa cell lysate using Anti-beta III Spectrin Antibody [SPTBN2/1582].