

Anti-beta III Spectrin Antibody [SPTBN2/1584] - BSA and Azide free (A253226)

Specifications:

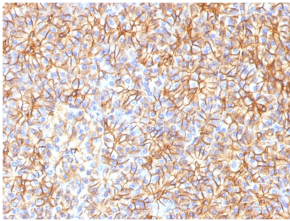
Name:	Anti-beta III Spectrin Antibody [SPTBN2/1584] - BSA and Azide free
Description:	Mouse monoclonal [SPTBN2/1584] antibody to beta III Spectrin .
Specificity:	Spectrin is an actin binding protein that is a major component of the plasma membrane skeleton. Spectrins function as membrane organizers and stabilizers by forming dimers, tetramers and higher polymers. Vertebrate spectrins have two alpha-subunits (alpha-I/alpha-II) four beta-subunits (beta-I-beta-IV) and a beta-H subunit creating diversity and specialization of function. Spectrin III is highly expressed in brain, kidney, pancreas and liver, and at lower levels in lung and placenta. Spectrin beta 3 is primarily expressed in nervous tissues with highest expression levels in the cerebellum, where it is found in Purkinje cell soma and dendrites.
Applications:	Flow Cytometry, IF, WB, IHC-P
Recommended Dilutions:	Flow Cytometry: 1-2 µg/million cells, IF: 1-2 µg/ml, WB: 1-2 µg/ml, IHC-P: 1-2 µg/ml
Reactivity:	Human, Rat, Mouse
Immunogen:	Recombinant fragment, around amino acids 356-475, of human SPTBN2 protein. The exact sequence is proprietary.
Host:	Mouse
Clonality:	Monoclonal
Clone ID:	SPTBN2/1584
Isotype:	IgG1
Light Chains:	kappa
Conjugate:	Unconjugated
Purification:	Protein A/G chromatography.
Concentration:	1 mg/ml
Product Form:	Liquid
Formulation:	Supplied in 10mM Phosphate Buffered Saline; without Sodium Azide and carrier free.
Storage:	Shipped at 4°C. Upon delivery aliquot and store at -20°C. Avoid freeze / thaw cycles.
General Notes:	This monoclonal antibody is also available in a different formulation with BSA and Sodium Azide - Anti-beta III Spectrin Antibody [SPTBN2/1584] (A250046).

Anti-beta III Spectrin Antibody [SPTBN2/1584] - BSA and Azide free (A253226)

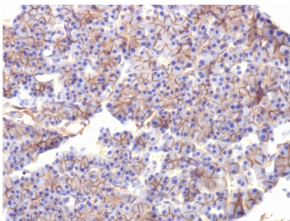
Specifications continued:

Disclaimer: This product is for research use only. It is not intended for diagnostic or therapeutic use.

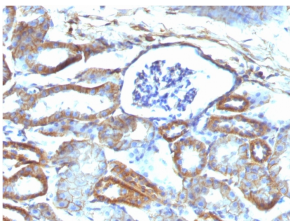
Images:



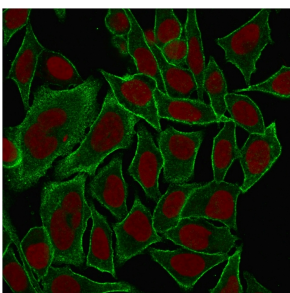
Immunohistochemical analysis of formalin-fixed, paraffin-embedded human pancreas using Anti-beta III Spectrin Antibody [SPTBN2/1584].



Immunohistochemical analysis of formalin-fixed, paraffin-embedded rat pancreas using Anti-beta III Spectrin Antibody [SPTBN2/1584].



Immunohistochemical analysis of formalin-fixed, paraffin-embedded mouse kidney using Anti-beta III Spectrin Antibody [SPTBN2/1584].



Immunofluorescent analysis of methanol fixed HeLa cells stained with Anti-beta III Spectrin Antibody [SPTBN2/1584] followed by Goat Anti-Mouse IgG (CF® 488) (Green). The nuclear counterstain is RedDot (Red).