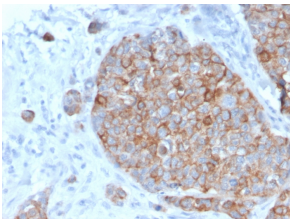


Anti-STAT2 Antibody [STAT2/2650] - BSA and Azide free (A253241)

Specifications:

Name:	Anti-STAT2 Antibody [STAT2/2650] - BSA and Azide free
Description:	Mouse monoclonal [STAT2/2650] antibody to STAT2.
Applications:	IHC-P
Recommended Dilutions:	IHC-P: 1-2 µg/ml
Reactivity:	Human
Immunogen:	Recombinant full-length human STAT2 protein.
Host:	Mouse
Clonality:	Monoclonal
Clone ID:	STAT2/2650
Isotype:	IgG1
Light Chains:	kappa
Conjugate:	Unconjugated
Purification:	Protein A/G chromatography.
Concentration:	1 mg/ml
Product Form:	Liquid
Formulation:	Supplied in 10mM Phosphate Buffered Saline; without Sodium Azide and carrier free.
Storage:	Shipped at 4°C. Upon delivery aliquot and store at -20°C. Avoid freeze / thaw cycles.
General Notes:	This monoclonal antibody is also available in a different formulation with BSA and Sodium Azide - Anti-STAT2 Antibody [STAT2/2650] (A250061).
Disclaimer:	This product is for research use only. It is not intended for diagnostic or therapeutic use.

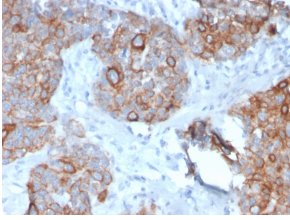
Images:



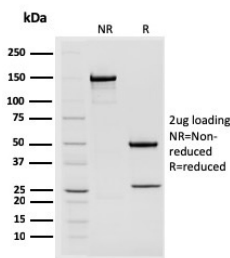
Immunohistochemical analysis of formalin-fixed, paraffin-embedded human prostate carcinoma using Anti-STAT2 Antibody [STAT2/2650].

Anti-STAT2 Antibody [STAT2/2650] - BSA and Azide free (A253241)

Images continued:



Immunohistochemical analysis of formalin-fixed, paraffin-embedded human prostate carcinoma using Anti-STAT2 Antibody [STAT2/2650].



SDS-PAGE analysis of Anti-STAT2 Antibody [STAT2/2650] under non-reduced and reduced conditions; showing intact IgG and intact heavy and light chains, respectively. SDS-PAGE analysis confirms the integrity and purity of the antibody.