

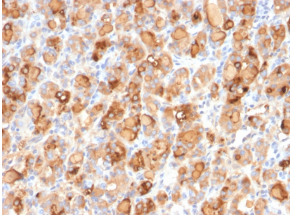
Anti-Thyroglobulin Antibody [r2H11] - BSA and Azide free (A253281)

Specifications:

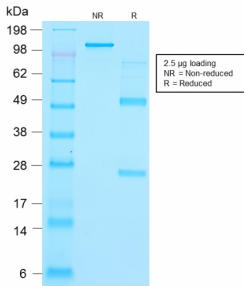
Name:	Anti-Thyroglobulin Antibody [r2H11] - BSA and Azide free
Description:	Recombinant mouse monoclonal [r2H11] antibody to Thyroglobulin.
Specificity:	This antibody reacts with a partially defined epitope of human Thyroglobulin; this epitope is different from the epitope recognized by Clone 6E1.
Applications:	IHC-P
Recommended Dilutions:	IHC-P: 0.1-0.2 µg/ml
Reactivity:	Human, Mouse, Rat
Immunogen:	Human thyroid follicular cells.
Host:	Mouse
Clonality:	Monoclonal
Clone ID:	r2H11
Isotype:	IgG1
Light Chains:	kappa
Conjugate:	Unconjugated
Purification:	Protein A/G chromatography.
Concentration:	1 mg/ml
Product Form:	Liquid
Formulation:	Supplied in 10mM Phosphate Buffered Saline; without Sodium Azide and carrier free.
Storage:	Shipped at 4°C. Upon delivery aliquot and store at -20°C. Avoid freeze / thaw cycles.
General Notes:	This monoclonal antibody is also available in a different formulation with BSA and Sodium Azide - Anti-Thyroglobulin Antibody [r2H11] (A250101).
Disclaimer:	This product is for research use only. It is not intended for diagnostic or therapeutic use.

Anti-Thyroglobulin Antibody [r2H11] - BSA and Azide free (A253281)

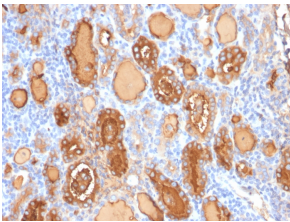
Images:



Immunohistochemical analysis of formalin-fixed, paraffin-embedded human thyroid using Anti-Thyroglobulin Antibody [r2H11].



SDS-PAGE analysis of Anti-Thyroglobulin Antibody [r2H11] under non-reduced and reduced conditions; showing intact IgG and intact heavy and light chains, respectively. SDS-PAGE analysis confirms the integrity and purity of the antibody.



Immunohistochemical analysis of formalin-fixed, paraffin-embedded human thyroid using Anti-Thyroglobulin Antibody [r2H11].