

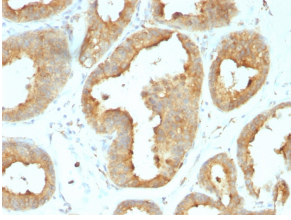
Anti-GRP94 Antibody [9G10.F8.2] - BSA and Azide free (A253389)

Specifications:

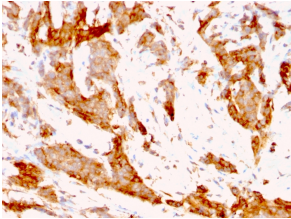
Name:	Anti-GRP94 Antibody [9G10.F8.2] - BSA and Azide free
Description:	Rat monoclonal [9G10.F8.2] antibody to GRP94.
Specificity:	This antibody recognizes a protein of 94kDa, which is identified as the glucose-regulated protein 94 (grp94) and also tumor rejection antigen (gp96). Grp94 shows a high degree of sequence homology with the heat shock protein 90 (hsp90). This MAb is highly specific to grp94 and shows minimal cross-reaction with other members of the HSP90 family. Grps are a class of proteins unresponsive to heat shock and are induced by glucose deprivation. Grp94 has been briefly studied as a prognostic factor in breast cancer.
Applications:	Flow Cytometry, IF, WB, IHC-P
Recommended Dilutions:	Flow Cytometry: 1-2 µg/million cells, IF: 1-2 µg/ml, WB: 1-2 µg/ml, IHC-P: 1-2 µg/ml
Reactivity:	Human, Monkey, Horse, Bovine, Sheep, Pig, Rabbit, Canine, Rat, Mouse, Hamster, Guinea Pig, Chicken, Xenopus laevis
Immunogen:	Native Glucose Regulated Protein 94 purified from chicken oviducts.
Host:	Rat
Clonality:	Monoclonal
Clone ID:	9G10.F8.2
Isotype:	IgG2a
Light Chains:	kappa
Conjugate:	Unconjugated
Purification:	Protein A/G chromatography.
Concentration:	1 mg/ml
Product Form:	Liquid
Formulation:	Supplied in 10mM Phosphate Buffered Saline; without Sodium Azide and carrier free.
Storage:	Shipped at 4°C. Upon delivery aliquot and store at -20°C. Avoid freeze / thaw cycles.
General Notes:	This monoclonal antibody is also available in a different formulation with BSA and Sodium Azide - Anti-GRP94 Antibody [9G10.F8.2] (A250209).
Disclaimer:	This product is for research use only. It is not intended for diagnostic or therapeutic use.

Anti-GRP94 Antibody [9G10.F8.2] - BSA and Azide free (A253389)

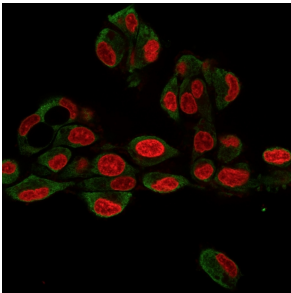
Images:



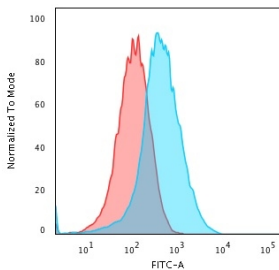
Immunohistochemical analysis of formalin-fixed, paraffin-embedded human breast carcinoma using Anti-GRP94 Antibody [9G10.F8.2].



Immunohistochemical analysis of formalin-fixed, paraffin-embedded human breast carcinoma using Anti-GRP94 Antibody [9G10.F8.2].



Immunofluorescent analysis of HePG2 cells stained with Anti-GRP94 Antibody [9G10.F8.2] followed by Goat Anti-Mouse IgG (CF® 488) (Green). The nuclear counterstain is RedDot (Red).



Flow cytometric analysis of PFA fixed HePG2 cells using Anti-GRP94 Antibody [9G10.F8.2] followed by Goat Anti-Rat IgG (CF® 488) (Blue). Isotype Control (Red).