

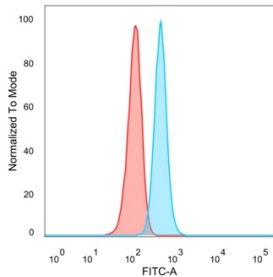
Anti-GTF2H2C Antibody [PCRP-GTF2H2C-2C9] - BSA and Azide free (A253426)

Specifications:

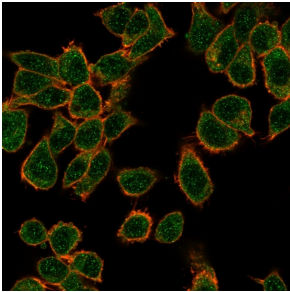
Name:	Anti-GTF2H2C Antibody [PCRP-GTF2H2C-2C9] - BSA and Azide free
Description:	Mouse monoclonal [PCRP-GTF2H2C-2C9] antibody to GTF2H2C.
Applications:	Flow Cytometry, IF, WB, IHC-P
Recommended Dilutions:	Flow Cytometry: 1-2 µg/million cells, IF: 1-2 µg/ml, WB: 1-2 µg/ml, IHC-P: 1-2 µg/ml
Reactivity:	Human
Cross Reactivity:	This antibody is predicted to cross react with Mouse and Rat.
Immunogen:	Recombinant full-length human GTF2H2C protein.
Host:	Mouse
Clonality:	Monoclonal
Clone ID:	PCRP-GTF2H2C-2C9
Isotype:	IgG2c
Conjugate:	Unconjugated
Purification:	Protein A/G chromatography.
Concentration:	1 mg/ml
Product Form:	Liquid
Formulation:	Supplied in 10mM Phosphate Buffered Saline; without Sodium Azide and carrier free.
Storage:	Shipped at 4°C. Upon delivery aliquot and store at -20°C. Avoid freeze / thaw cycles.
General Notes:	This monoclonal antibody is also available in a different formulation with BSA and Sodium Azide - Anti-GTF2H2C Antibody [PCRP-GTF2H2C-2C9] (A250246).
Disclaimer:	This product is for research use only. It is not intended for diagnostic or therapeutic use.

Anti-GTF2H2C Antibody [PCRP-GTF2H2C-2C9] - BSA and Azide free (A253426)

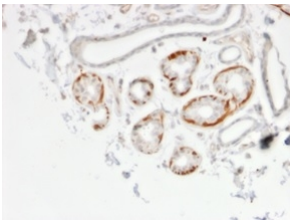
Images:



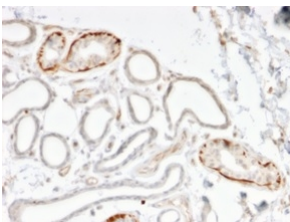
Flow cytometric analysis of PFA fixed HeLa cells using Anti-GTF2H2C Antibody [PCRP-GTF2H2C-2C9] followed by Goat Anti-Mouse IgG (CF® 488) (Blue). Unstained cells (red).



Immunofluorescent analysis of PFA fixed HeLa cells stained with Anti-GTF2H2C Antibody [PCRP-GTF2H2C-2C9] followed by Goat Anti-Mouse IgG (CF® 488) (Green). Counterstain is Phalloidin (Red).



Immunohistochemical analysis of formalin-fixed, paraffin-embedded human breast carcinoma using Anti-GTF2H2C Antibody [PCRP-GTF2H2C-2C9].



Immunohistochemical analysis of formalin-fixed, paraffin-embedded human breast carcinoma using Anti-GTF2H2C Antibody [PCRP-GTF2H2C-2C9].